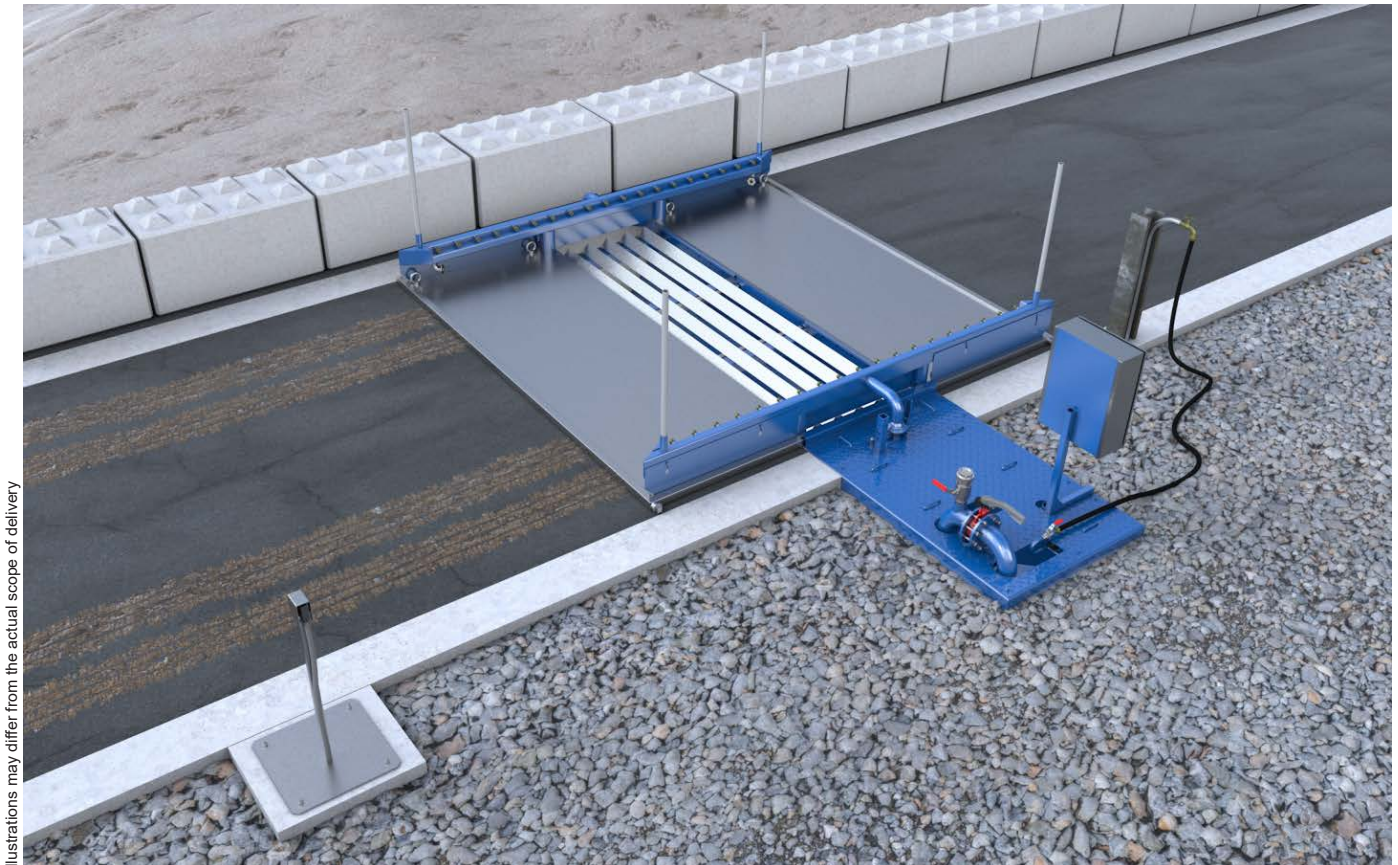


Wheel washing system MobyDick Dragon B

Art. no. MDG-D002-E002

Painted, water-bearing wash unit, integrated recycling tank, pump technology and a control system.



Illustrations may differ from the actual scope of delivery

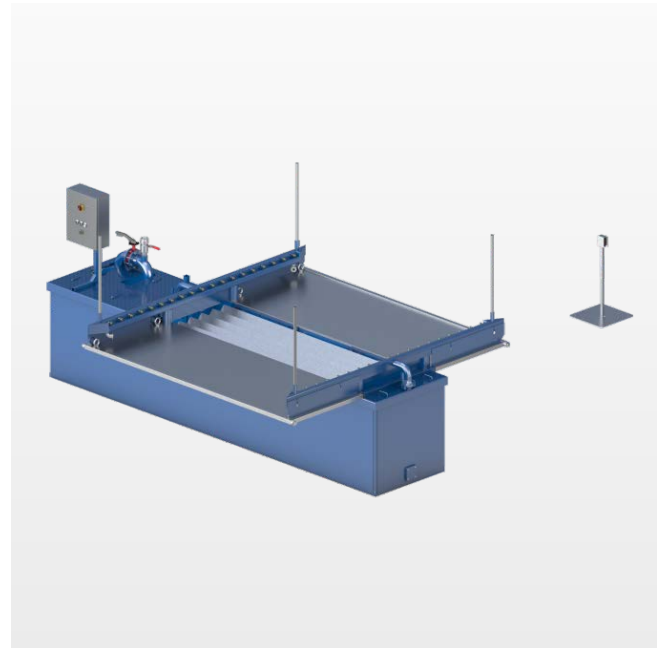
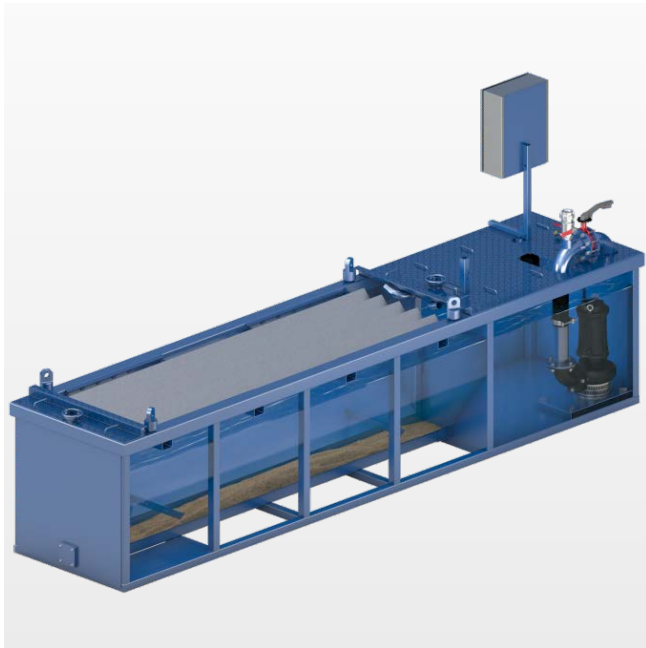
MobyDick Dragon B – A model from the TailorMade model line

Dragon – A full wheel washing system at low cost

The MobyDick Dragon is a powerful, compact wheel washing system consisting of a 130 inch long wash unit with integrated recycling tank. It is available with and without a scraper conveyor and has an excellent price/performance ratio. The ideal solution for stationary or mobile use where truck tires are not too soiled or the main problem is dust. Installation takes just a few hours and only requires a small space.

Function description

A truck drives slowly into the wheel washing system. The vehicle detection sensor triggers the washing process automatically. The specially designed nozzle system consisting of floor and side nozzles ensures intensive cleaning of all tires during one turn of the wheels. Higher areas of the vehicle like windows and rear-view mirrors are not washed, keeping the driver's vision clear. The rolling and kneading effect generated by the galvanized profiles further improves the cleaning of the tire treads. The duration of the washing process is freely selectable based on conditions with the time relay switch installed in the control cabinet. The soiled water flows directly into the integrated recycling tank. The solid dirt settles to the bottom. The water is led to the pump chamber via a separator wall. There it is reused by the robust MobyPump immersion pump for further spraying. A pump truck removes the solid dirt from the recycling tank.



Water recycling

In all MobyDick wheel washing systems the water is circulated in a closed circuit. Water treatment is via sedimentation in the recycling tank. Sedimentation can be accelerated by adding a flocculant. Settled solids in the recycling tank should be removed regularly (depending on frequency of use) by a pump truck. The galvanized grid can be removed for this.

Scope of supply

- Painted, water-bearing wash unit
- Galvanized, driveable grid
- Galvanized side wings as entrance and exit areas
- Integrated recycling tank
- Control cabinet
- Optical sensor to trigger the washing process
- 1 MobyPump immersion pump
- Connection for manual cleaning system "Regular" (optional)

Specifications (For dimensions see layout drawing)

• Drive-through length	130 in
• Drive-through width	108 in
• Maximum axle load	16.5 tons
• Nozzles	70 pcs.
• Nozzles, backwash	38 pcs.
• Nozzle Ø	various
• Recycling tank volume	900 gal
• Maximum pumping capacity	660 gal/min
• Electrical connection values	7.4 HP/16 A
• Sound emission	< 75 dB
• Weight (ready to ship)	5,500 lbs

Areas of application

The Dragon B model can wash up to 100 lightly soiled trucks per day.

Typical operation sites – depending on the number of trucks and degree of soiling – are

- Construction sites
- Gravel plants and quarries
- Concrete mixing plants
- Recycling facilities
- Port facilities
- Food industry
- Cleaning and disinfection
- Other areas on request