



ConLine KIT Plus

Greater performance for demanding environments



www.mobydick.com

Wheel washing system

MobyDick ConLine KIT Plus 400 B-50P

Art. no. MDC-100-001

Galvanized, water-bearing wash unit with splash guard walls, recycling tank, pump technology, and a control system.



Illustrations may differ from the actual scope of delivery

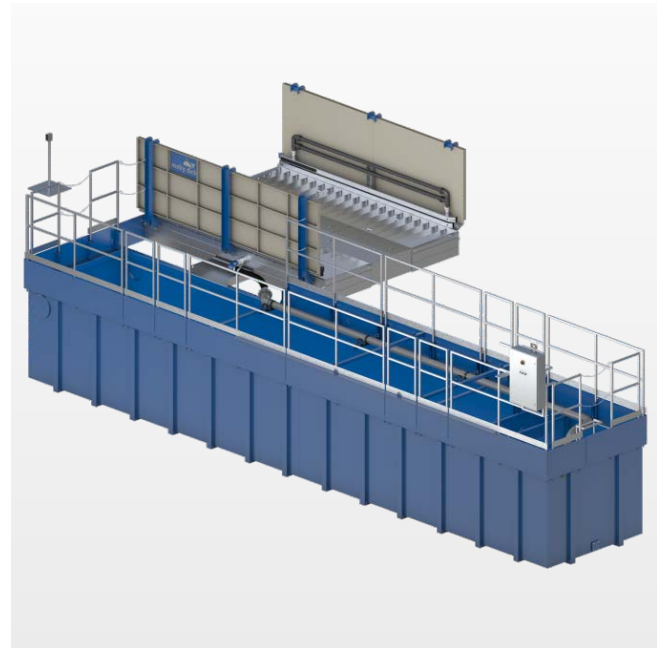
KIT Plus 400 B-50P – a model from the ConLine KIT Plus model line

ConLine KIT Plus – Greater performance for high demands

The ConLine KIT Plus line consists of a large selection of mobile and stationary wheel washing systems that are particularly suitable for use with high truck drive-through frequencies. These modern drive-through systems are based on more than 30 years of experience with wheel washing systems and, in addition to the classic MobyDick advantages, also offer a large choice of options and an attractive price/performance ratio. All ConLine KIT Plus systems are quick and easy to install and require only minimal maintenance.

Function description

A truck drives slowly into the wheel washing system. The vehicle identification sensor automatically triggers the washing process. The specially coordinated nozzle system, consisting of a large number of bottom and side nozzles, then ensures the intensive cleaning of all tires and the entire chassis in one wheel rotation. Higher vehicle areas such as windows and rear-view mirrors are not washed, to leave the driver's field of vision clear. The kneading effect created by the angle profiles gives the tire treads additional cleaning. The duration of the washing process can be freely selected using the timer relay in the control cabinet, in accordance with the relevant operating conditions. The waste water runs via the return channel from the wash unit to the side recycling tank. This is where the washed-off solids settle out. The water is fed under a surge wall and over the partition wall with sieve insert into the pump chamber. There it is reused by a robust MobyPump immersion pump for further spraying. An excavator or suction vehicle removes the settled solids from the recycling tank.



Water recycling

In all MobyDick wheel washing systems the water is circulated in a closed circuit. Water treatment is via sedimentation in the recycling tank. Sedimentation can be accelerated by adding a flocculant. The solids that settle out in the recycling tank should be extracted with an excavator or suctioned out with a suction vehicle at regular intervals (depending on how frequently the system is used).

Scope of supply

- Galvanized water-bearing wash unit
- Splash guard wall per side
- Double side nozzle bars per side
- Hot-galvanized return channel for the waste water
- Control cabinet
- Optical sensor to trigger the washing process
- 2 MobyPump immersion pumps
- Pump bracket and piping
- Recycling tank 50 B with entry ladder
- Edge elevation on recycling tank to end at ground level
- Safety rail for link chains

Specifications (Dimensions see layout)

| | |
|--------------------------------|---------------|
| • Drive-through length | 157 in |
| • Passage width | 110 in |
| • Maximum axle load | 16.5 tons |
| • Splash guard wall height | 54 in |
| • Nozzles | 130 pcs. |
| • Nozzle Ø | 0.3 in |
| • Recycling tank volume | 13,200 gal |
| • Maximum pumping capacity | 2×660 gal/min |
| • Electrical connection values | 16 HP/30 A |
| • Sound emission | < 75 dB |
| • Weight (ready to ship) | 17,650 lbs |

Fields of application

The KIT Plus 400 B-50P model can wash up to 250 moderately soiled trucks per day.

Typical operation sites – depending on the number of trucks and degree of soiling – are

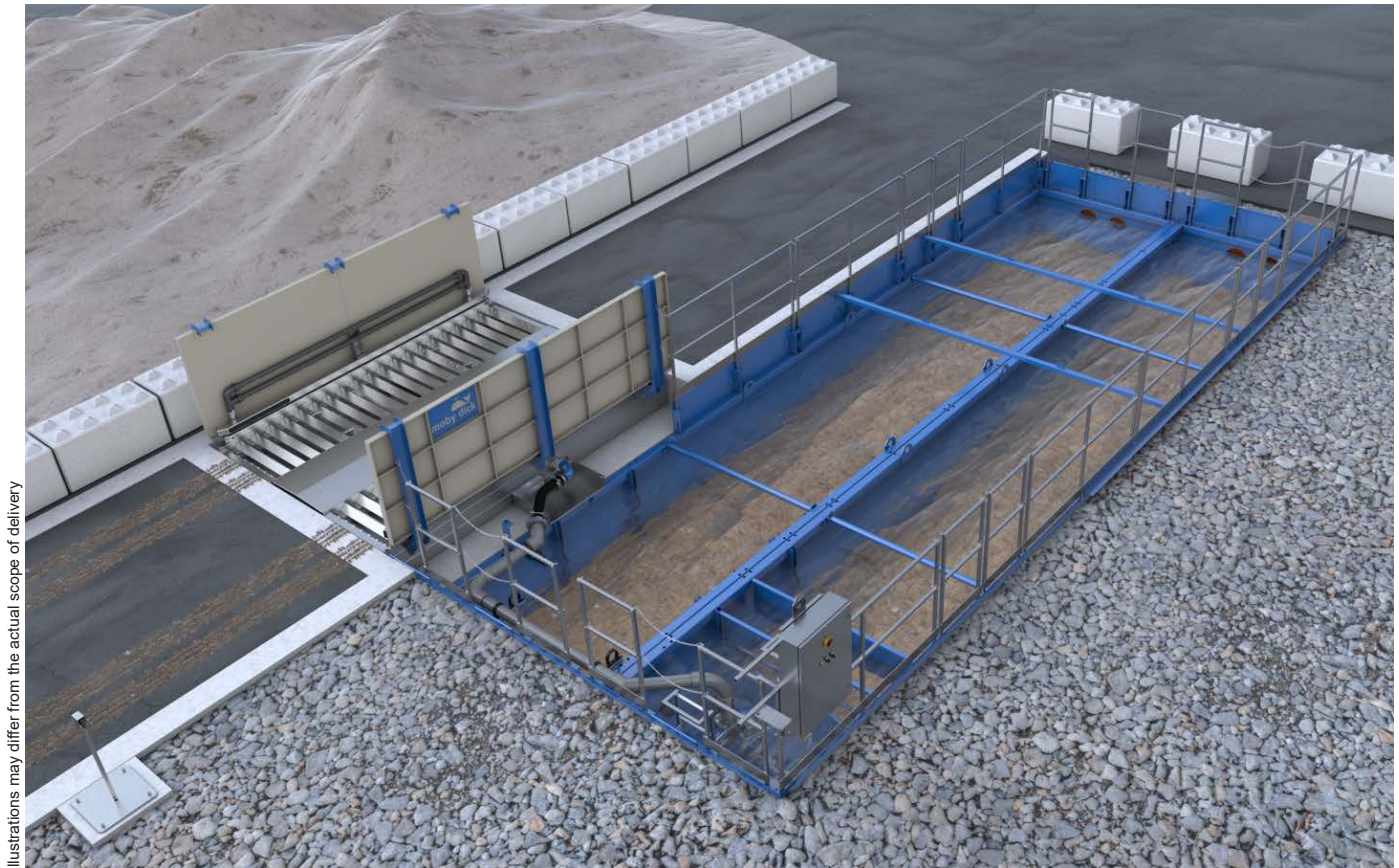
- Construction sites
- Gravel plants and quarries
- Concrete mixing plants
- Recycling facilities
- Landfill sites
- Port facilities
- Food industry
- Cleaning and disinfection
- Other areas on request

Wheel washing system

MobyDick ConLine KIT Plus 400 B-100P

Art. no. MDC-100-002

Hot-dip galvanized, water-bearing wash unit with splash guard walls, recycling tank, pump technology, and a control system.



Illustrations may differ from the actual scope of delivery

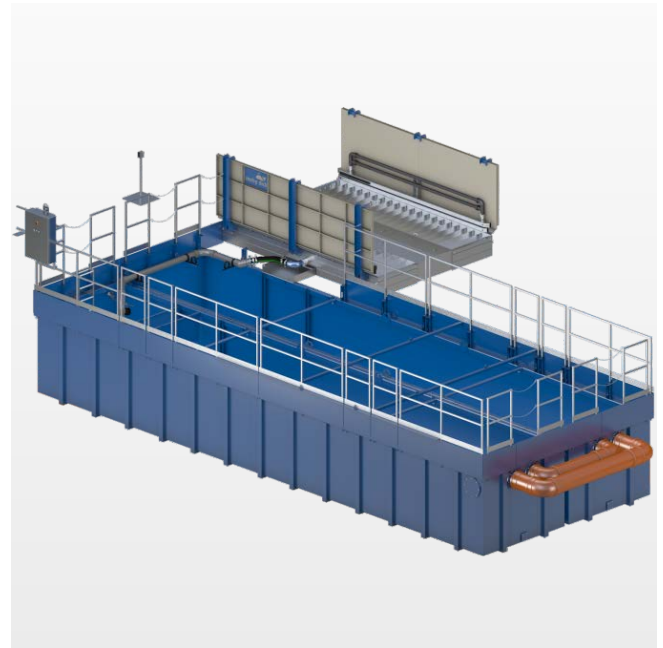
KIT Plus 400 B-100P – a model from the ConLine KIT Plus model line

ConLine KIT Plus – Greater performance for high demands

The ConLine KIT Plus line consists of a large selection of mobile and stationary wheel washing systems that are particularly suitable for use with high truck drive-through frequencies. These modern drive-through systems are based on more than 30 years of experience with wheel washing systems and, in addition to the classic MobyDick advantages, also offer a large choice of options and an attractive price/performance ratio. All ConLine KIT Plus systems are quick and easy to install and require only minimal maintenance.

Function description

A truck drives slowly into the wheel washing system. The vehicle identification sensor automatically triggers the washing process. The specially coordinated nozzle system, consisting of a large number of bottom and side nozzles, then ensures the intensive cleaning of all tires and the entire chassis in one wheel rotation. Higher vehicle areas such as windows and rear-view mirrors are not washed, so as to leave the driver's field of vision clear. The kneading effect created by the angle profiles gives the tire treads additional cleaning. The duration of the washing process can be freely selected using the timer relay in the control cabinet, in accordance with the relevant operating conditions. The waste water runs via the return channel from the wash unit to the recycling tank on the side. This is where the washed-off solids settle out. The water is fed under a surge wall and over the partition wall with sieve insert into the pump chamber. There it is reused by the robust MobyPump immersion pump for further spraying. An excavator or suction vehicle removes the settled solids from the recycling tanks.



Water recycling

In all MobyDick wheel washing systems the water is circulated in a closed circuit. Water treatment is via sedimentation in the recycling tank. Sedimentation can be accelerated by adding a flocculant. The solids that settle out in the recycling tank should be extracted with an excavator or suctioned out with a suction vehicle at regular intervals (depending on how frequently the system is used).

Specifications (Dimensions see layout)

| | |
|--------------------------------|---------------|
| • Drive-through length | 157 in |
| • Passage width | 110 in |
| • Maximum axle load | 16.5 tons |
| • Splash guard wall height | 54 in |
| • Nozzles | 130 pcs. |
| • Nozzle Ø | 0.3 in |
| • Recycling tank volume | 2×13,200 gal |
| • Maximum pumping capacity | 2×660 gal/min |
| • Electrical connection values | 16 HP/30 A |
| • Sound emission | < 75 dB |
| • Weight (ready to ship) | 27,600 lbs |

Scope of supply

- Hot-dip galvanized, water-bearing wash unit
- Splash guard wall per side
- Double side nozzle bars per side
- Hot-dip galvanized return channel for the waste water
- Control cabinet
- Optical sensor to trigger the washing process
- 2 MobyPump immersion pumps
- Pump bracket and piping
- 2 recycling tanks 50 B with entry ladder
- Edge elevation on recycling tank to end at ground level
- Safety rail for link chains

Fields of application

The KIT Plus 400 B-100P model can wash up to 350 moderately soiled trucks per day.

Typical operation sites – depending on the number of trucks and degree of soiling – are

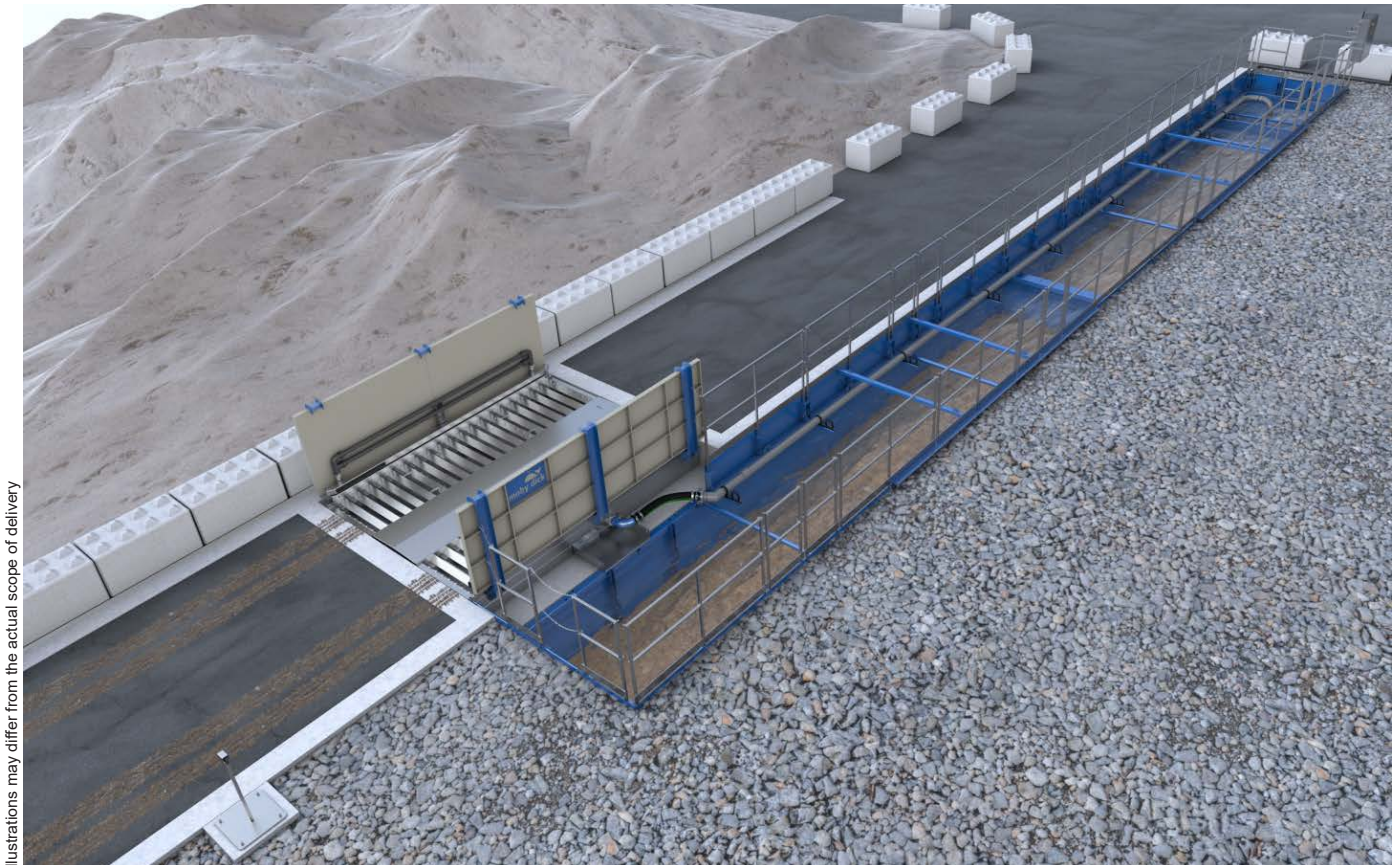
- Construction sites
- Gravel plants and quarries
- Concrete mixing plants
- Recycling facilities
- Landfill sites
- Port facilities
- Food industry
- Cleaning and disinfection
- Other areas on request

Wheel washing system

MobyDick ConLine KIT Plus 400 B-100S

Art. no. MDC-100-003

Hot-dip galvanized, water-bearing wash unit with splash guard walls, recycling tank, pump technology, and a control system.



Illustrations may differ from the actual scope of delivery

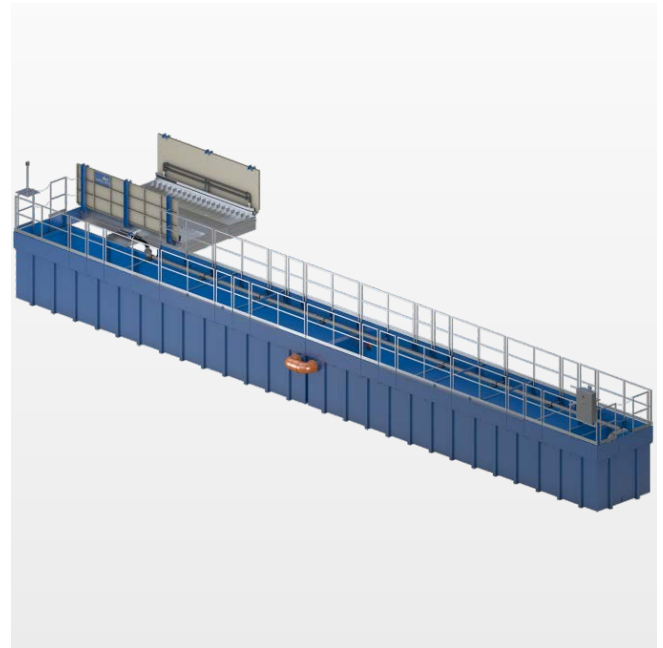
KIT Plus 400 B-100S – a model from the ConLine KIT Plus model line

ConLine KIT Plus – Greater performance for high demands

The ConLine KIT Plus line consists of a large selection of mobile and stationary wheel washing systems that are particularly suitable for use with high truck drive-through frequencies. These modern drive-through systems are based on more than 30 years of experience with wheel washing systems and, in addition to the classic MobyDick advantages, also offer a large choice of options and an attractive price/performance ratio. All ConLine KIT Plus systems are quick and easy to install and require only minimal maintenance.

Function description

A truck drives slowly into the wheel washing system. The vehicle identification sensor automatically triggers the washing process. The specially coordinated nozzle system, consisting of a large number of bottom and side nozzles, then ensures the intensive cleaning of all tires and the entire chassis in one wheel rotation. Higher vehicle areas such as windows and rear-view mirrors are not washed, so as to leave the driver's field of vision clear. The kneading effect created by the angle profiles gives the tire treads additional cleaning. The duration of the washing process can be freely selected using the timer relay in the control cabinet, in accordance with the relevant operating conditions. The waste water runs via the return channel from the wash unit to the recycling tank on the side. This is where the washed-off solids settle out. The water is fed under a surge wall and over the partition wall with sieve insert into the pump chamber. There it is reused by the robust MobyPump immersion pump for further spraying. An excavator or suction vehicle removes the settled solids from the recycling tanks.



Water recycling

In all MobyDick wheel washing systems the water is circulated in a closed circuit. Water treatment is via sedimentation in the recycling tank. Sedimentation can be accelerated by adding a flocculant. The solids that settle out in the recycling tank should be extracted with an excavator or suctioned out with a suction vehicle at regular intervals (depending on how frequently the system is used).

Scope of supply

- Hot-dip galvanized, water-bearing wash unit
- Splash guard wall per side
- Double side nozzle bars per side
- Hot-dip galvanized return channel for the waste water
- Control cabinet
- Optical sensor to trigger the washing process
- 2 MobyPump immersion pumps
- Pump bracket and piping
- 2 recycling tanks 50 B with entry ladder
- Edge elevation on recycling tank to end at ground level
- Safety rail for link chains

Specifications (Dimensions see layout)

| | |
|--------------------------------|---------------|
| • Drive-through length | 157 in |
| • Passage width | 110 in |
| • Maximum axle load | 16.5 tons |
| • Splash guard wall height | 54 in |
| • Nozzles | 130 pcs. |
| • Nozzle Ø | 0.3 in |
| • Recycling tank volume | 2×13,200 gal |
| • Maximum pumping capacity | 2×660 gal/min |
| • Electrical connection values | 16 HP/30 A |
| • Sound emission | < 75 dB |
| • Weight (ready to ship) | 27,600 lbs |

Fields of application

The KIT Plus 400 B-100S model can wash up to 350 moderately soiled trucks per day.

Typical operation sites – depending on the number of trucks and degree of soiling – are

- Construction sites
- Gravel plants and quarries
- Concrete mixing plants
- Recycling facilities
- Landfill sites
- Port facilities
- Food industry
- Cleaning and disinfection
- Other areas on request

Wheel washing system

MobyDick ConLine KIT Plus 600 B-50P

Art. no. MDC-100-004

Hot-dip galvanized, water-bearing wash unit with splash guard walls, recycling tank, pump technology, and a control system.



Illustrations may differ from the actual scope of delivery

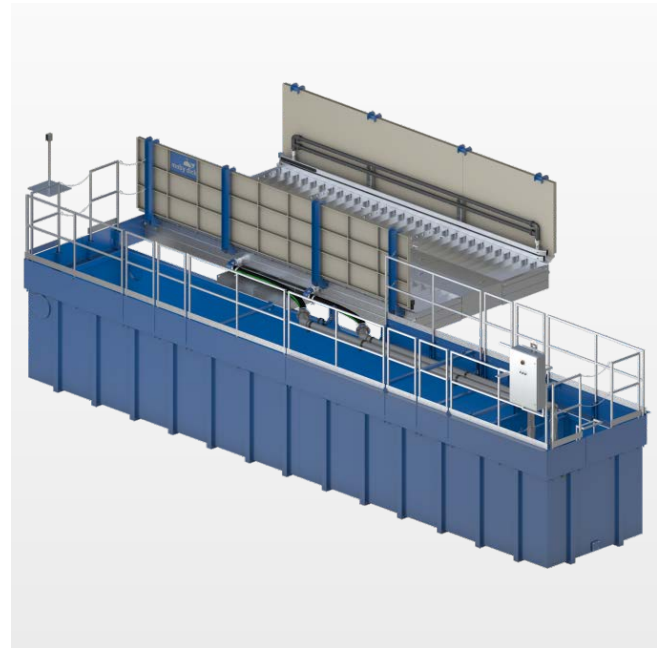
KIT Plus 600 B-50P – a model from the ConLine KIT Plus model line

ConLine KIT Plus – Greater performance for high demands

The ConLine KIT Plus line consists of a large selection of mobile and stationary wheel washing systems that are particularly suitable for use with high truck drive-through frequencies. These modern drive-through systems are based on more than 30 years of experience with wheel washing systems and, in addition to the classic MobyDick advantages, also offer a large choice of options and an attractive price/performance ratio. All ConLine KIT Plus systems are quick and easy to install and require only minimal maintenance.

Function description

A truck drives slowly into the wheel washing system. The vehicle identification sensor automatically triggers the washing process. The specially coordinated nozzle system, consisting of a large number of bottom and side nozzles, then ensures the intensive cleaning of all tires and the entire chassis in just over one wheel rotation. Higher vehicle areas such as windows and rear-view mirrors are not washed, so as to leave the driver's field of vision clear. The kneading effect created by the angle profiles gives the tire treads additional cleaning. The duration of the washing process can be freely selected using the timer relay in the control cabinet, in accordance with the relevant operating conditions. The waste water runs via the return channel from the wash unit to the recycling tank on the side. This is where the washed-off solids settle out. The water is fed under a surge wall and over the partition wall with sieve insert into the pump chamber. There it is reused by the robust MobyPump immersion pump for further spraying. An excavator or suction vehicle removes the settled solids from the recycling tank.



Water recycling

In all MobyDick wheel washing systems the water is circulated in a closed circuit. Water treatment is via sedimentation in the recycling tank. Sedimentation can be accelerated by adding a flocculant. The solids that settle out in the recycling tank should be extracted with an excavator or suctioned out with a suction vehicle at regular intervals (depending on how frequently the system is used).

Scope of supply

- Hot-dip galvanized, water-bearing wash unit
- Splash guard wall per side
- Double side nozzle bars per side
- 2 hot-dip galvanized return channels for the waste water
- Control cabinet
- Optical sensor to trigger the washing process
- 3 MobyPump immersion pumps
- Pump bracket and piping
- Recycling tank 50 B with entry ladder
- Edge elevation on recycling tank to end at ground level
- Safety rail for link chains

Specifications (Dimensions see layout)

| | |
|--------------------------------|---------------|
| • Drive-through length | 236 in |
| • Passage width | 110 in |
| • Maximum axle load | 16.5 tons |
| • Splash guard wall height | 54 in |
| • Nozzles | 226 pcs. |
| • Nozzle Ø | 0.3 in |
| • Recycling tank volume | 13,200 gal |
| • Maximum pumping capacity | 3×660 gal/min |
| • Electrical connection values | 23,5 HP/40 A |
| • Sound emission | < 75 dB |
| • Weight (ready to ship) | 20,950 lbs |

Fields of application

The KIT Plus 600 B-50P model can wash up to 250 moderately soiled trucks per day.

Typical operation sites – depending on the number of trucks and degree of soiling – are

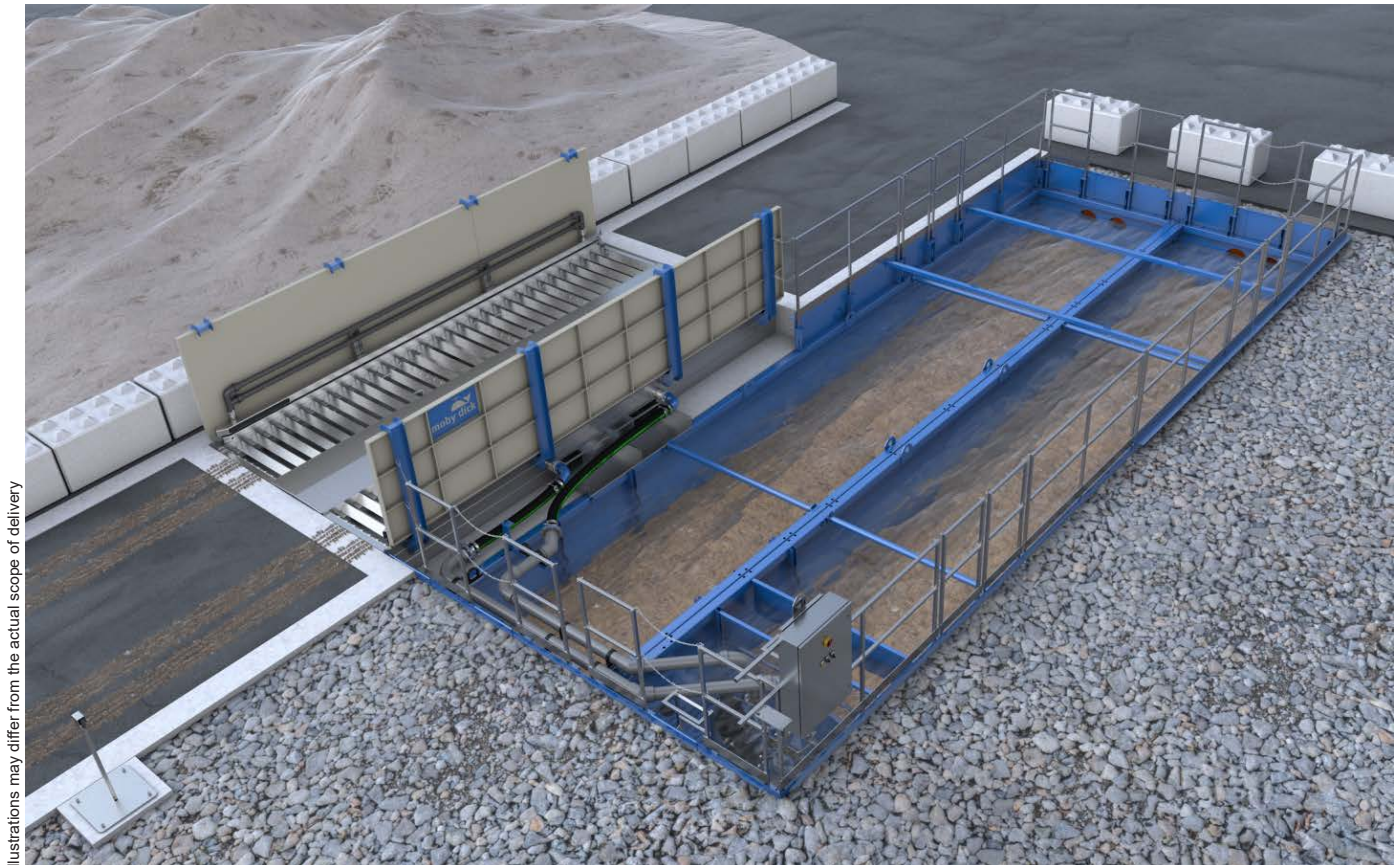
- Construction sites
- Gravel plants and quarries
- Concrete mixing plants
- Recycling facilities
- Landfill sites
- Port facilities
- Food industry
- Cleaning and disinfection
- Other areas on request

Wheel washing system

MobyDick ConLine KIT Plus 600 B-100P

Art. no. MDC-100-005

Hot-dip galvanized, water-bearing wash unit with splash guard walls, recycling tank, pump technology, and a control system.



Illustrations may differ from the actual scope of delivery

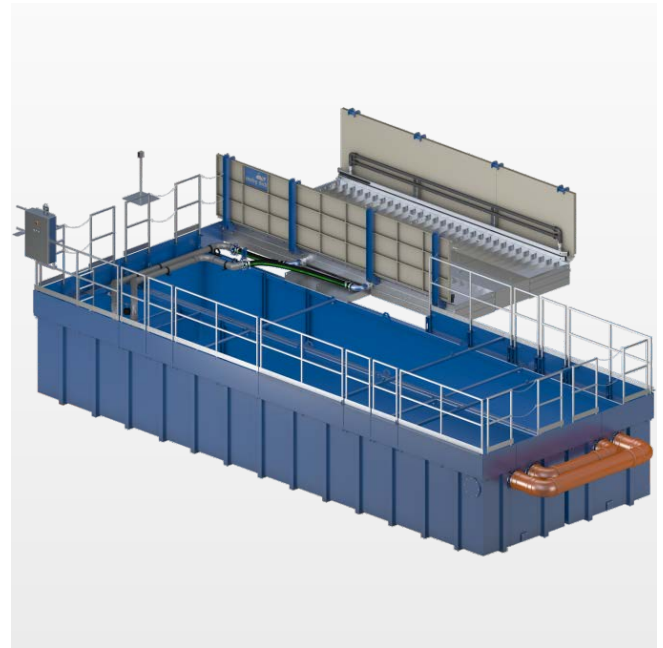
KIT Plus 600 B-100P – a model from the ConLine KIT Plus model line

ConLine KIT Plus – Greater performance for high demands

The ConLine KIT Plus line consists of a large selection of mobile and stationary wheel washing systems that are particularly suitable for use with high truck drive-through frequencies. These modern drive-through systems are based on more than 30 years of experience with wheel washing systems and, in addition to the classic MobyDick advantages, also offer a large choice of options and an attractive price/performance ratio. All ConLine KIT Plus systems are quick and easy to install and require only minimal maintenance.

Function description

A truck drives slowly into the wheel washing system. The vehicle identification sensor automatically triggers the washing process. The specially coordinated nozzle system, consisting of a large number of bottom and side nozzles, then ensures the intensive cleaning of all tires and the entire chassis in just over one wheel rotation. Higher vehicle areas such as windows and rear-view mirrors are not washed, so as to leave the driver's field of vision clear. The kneading effect created by the angle profiles gives the tire treads additional cleaning. The duration of the washing process can be freely selected using the timer relay in the control cabinet, in accordance with the relevant operating conditions. The waste water runs via the return channels from the wash unit to the recycling tanks on the side. This is where the washed-off solids settle out. The water is fed under a surge wall and over the partition wall with sieve insert into the pump chamber. There it is reused by the robust MobyPump immersion pump for further spraying. An excavator or suction vehicle removes the settled solids from the recycling tanks.



Water recycling

In all MobyDick wheel washing systems the water is circulated in a closed circuit. Water treatment is via sedimentation in the recycling tank. Sedimentation can be accelerated by adding a flocculant. The solids that settle out in the recycling tank should be extracted with an excavator or suctioned out with a suction vehicle at regular intervals (depending on how frequently the system is used).

Scope of supply

- Hot-dip galvanized, water-bearing wash unit
- Splash guard wall per side
- Double side nozzle bars per side
- 2 hot-dip galvanized return channels for the waste water
- Control cabinet
- Optical sensor to trigger the washing process
- 3 MobyPump immersion pumps
- Pump bracket and piping
- 2 recycling tanks 50 B with entry ladder
- Edge elevation on recycling tank to end at ground level
- Safety rail for link chains

Specifications (Dimensions see layout)

| | |
|--------------------------------|---------------|
| • Drive-through length | 236 in |
| • Passage width | 110 in |
| • Maximum axle load | 16.5 tons |
| • Splash guard wall height | 54 in |
| • Nozzles | 226 pcs. |
| • Nozzle Ø | 0.3 in |
| • Recycling tank volume | 2×13,200 gal |
| • Maximum pumping capacity | 3×660 gal/min |
| • Electrical connection values | 23,5 HP/40 A |
| • Sound emission | < 75 dB |
| • Weight (ready to ship) | 30,900 lbs |

Fields of application

The KIT Plus 600 B-100P model can wash up to 350 moderately soiled trucks per day.

Typical operation sites – depending on the number of trucks and degree of soiling – are

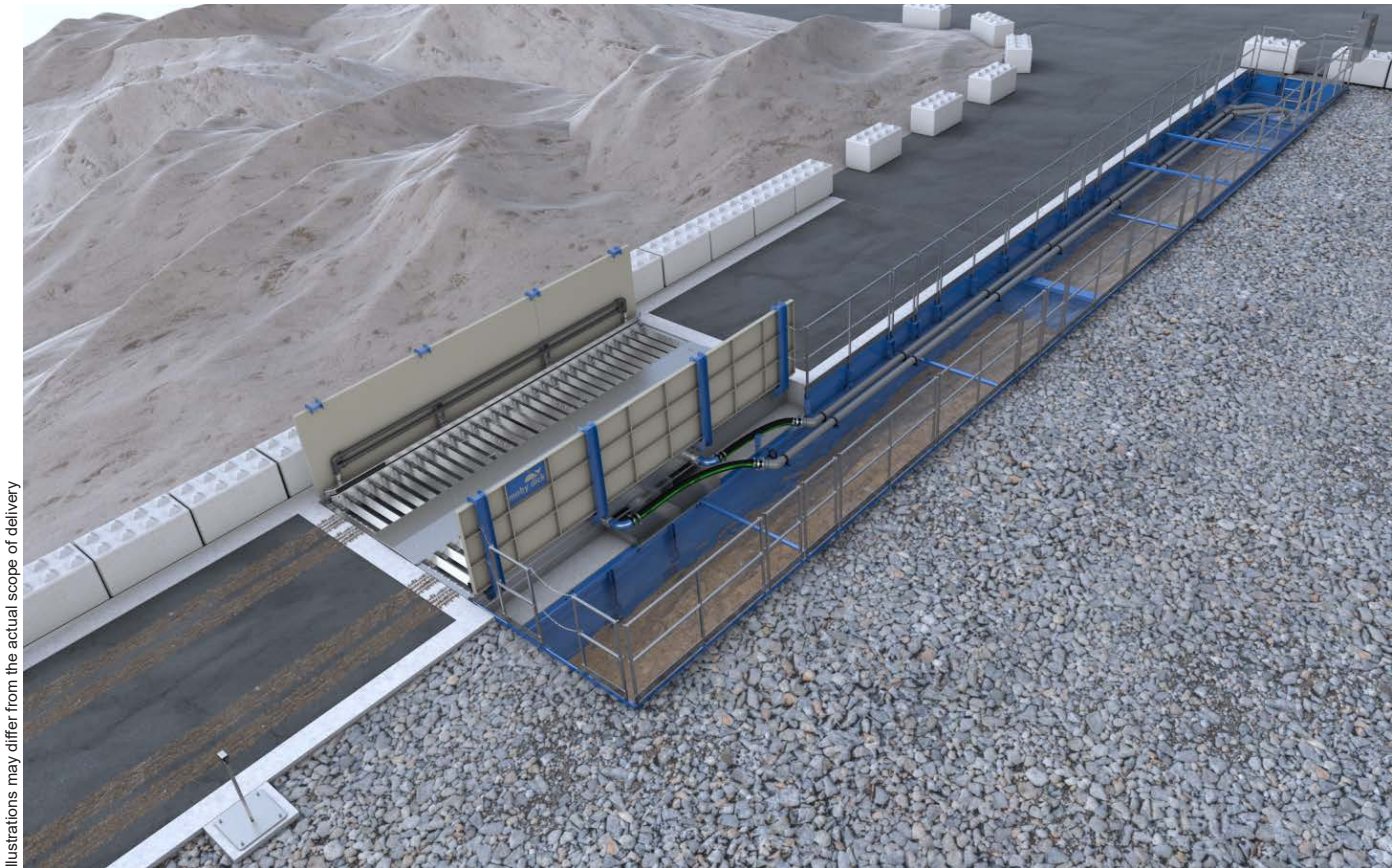
- Construction sites
- Gravel plants and quarries
- Concrete mixing plants
- Recycling facilities
- Landfill sites
- Port facilities
- Food industry
- Cleaning and disinfection
- Other areas on request

Wheel washing system

MobyDick ConLine KIT Plus 600 B-100S

Art. no. MDC-100-006

Hot-dip galvanized, water-bearing wash unit with splash guard walls, recycling tank, pump technology, and a control system.



Illustrations may differ from the actual scope of delivery

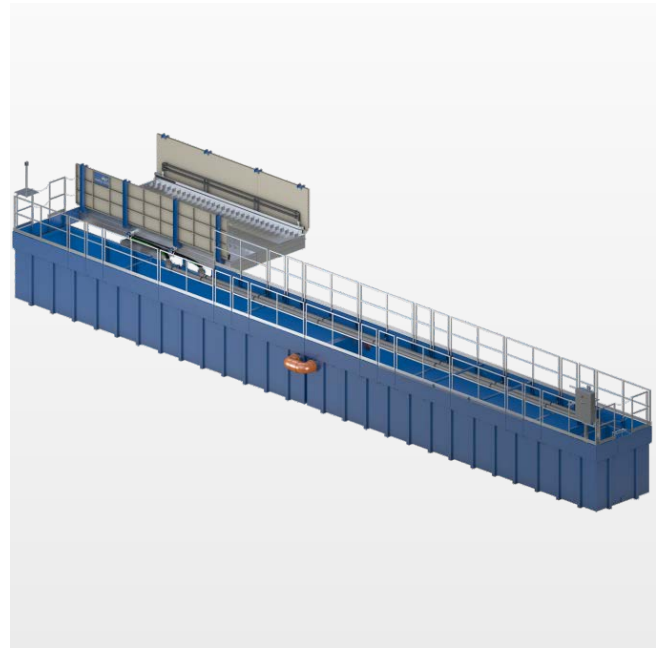
KIT Plus 600 B-100S – a model from the ConLine KIT Plus model line

ConLine KIT Plus – Greater performance for high demands

The ConLine KIT Plus line consists of a large selection of mobile and stationary wheel washing systems that are particularly suitable for use with high truck drive-through frequencies. These modern drive-through systems are based on more than 30 years of experience with wheel washing systems and, in addition to the classic MobyDick advantages, also offer a large choice of options and an attractive price/performance ratio. All ConLine KIT Plus systems are quick and easy to install and require only minimal maintenance.

Function description

A truck drives slowly into the wheel washing system. The vehicle identification sensor automatically triggers the washing process. The specially coordinated nozzle system, consisting of a large number of bottom and side nozzles, then ensures the intensive cleaning of all tires and the entire chassis in just over one wheel rotation. Higher vehicle areas such as windows and rear-view mirrors are not washed, so as to leave the driver's field of vision clear. The kneading effect created by the angle profiles gives the tire treads additional cleaning. The duration of the washing process can be freely selected using the timer relay in the control cabinet, in accordance with the relevant operating conditions. The waste water runs via the return channels from the wash unit to the recycling tanks on the side. This is where the washed-off solids settle out. The water is fed under a surge wall and over the partition wall with sieve insert into the pump chamber. There it is reused by the robust MobyPump immersion pump for further spraying. An excavator or suction vehicle removes the settled solids from the recycling tanks.



Water recycling

In all MobyDick wheel washing systems the water is circulated in a closed circuit. Water treatment is via sedimentation in the recycling tank. Sedimentation can be accelerated by adding a flocculant. The solids that settle out in the recycling tank should be extracted with an excavator or suctioned out with a suction vehicle at regular intervals (depending on how frequently the system is used).

Scope of supply

- Hot-dip galvanized, water-bearing wash unit
- Splash guard wall per side
- Double side nozzle bars per side
- 2 hot-dip galvanized return channels for the waste water
- Control cabinet
- Optical sensor to trigger the washing process
- 3 MobyPump immersion pumps
- Pump bracket and piping
- 2 recycling tanks 50 B with entry ladder
- Edge elevation on recycling tank to end at ground level
- Safety rail for link chains

Specifications (Dimensions see layout)

| | |
|--------------------------------|---------------|
| • Drive-through length | 236 in |
| • Passage width | 110 in |
| • Maximum axle load | 16.5 tons |
| • Splash guard wall height | 54 in |
| • Nozzles | 226 pcs. |
| • Nozzle Ø | 0.3 in |
| • Recycling tank volume | 2×13,200 gal |
| • Maximum pumping capacity | 3×660 gal/min |
| • Electrical connection values | 23,5 HP/40 A |
| • Sound emission | < 75 dB |
| • Weight (ready to ship) | 30,900 lbs |

Fields of application

The KIT Plus 600 B-100S model can wash up to 350 moderately soiled trucks per day.

Typical operation sites – depending on the number of trucks and degree of soiling – are

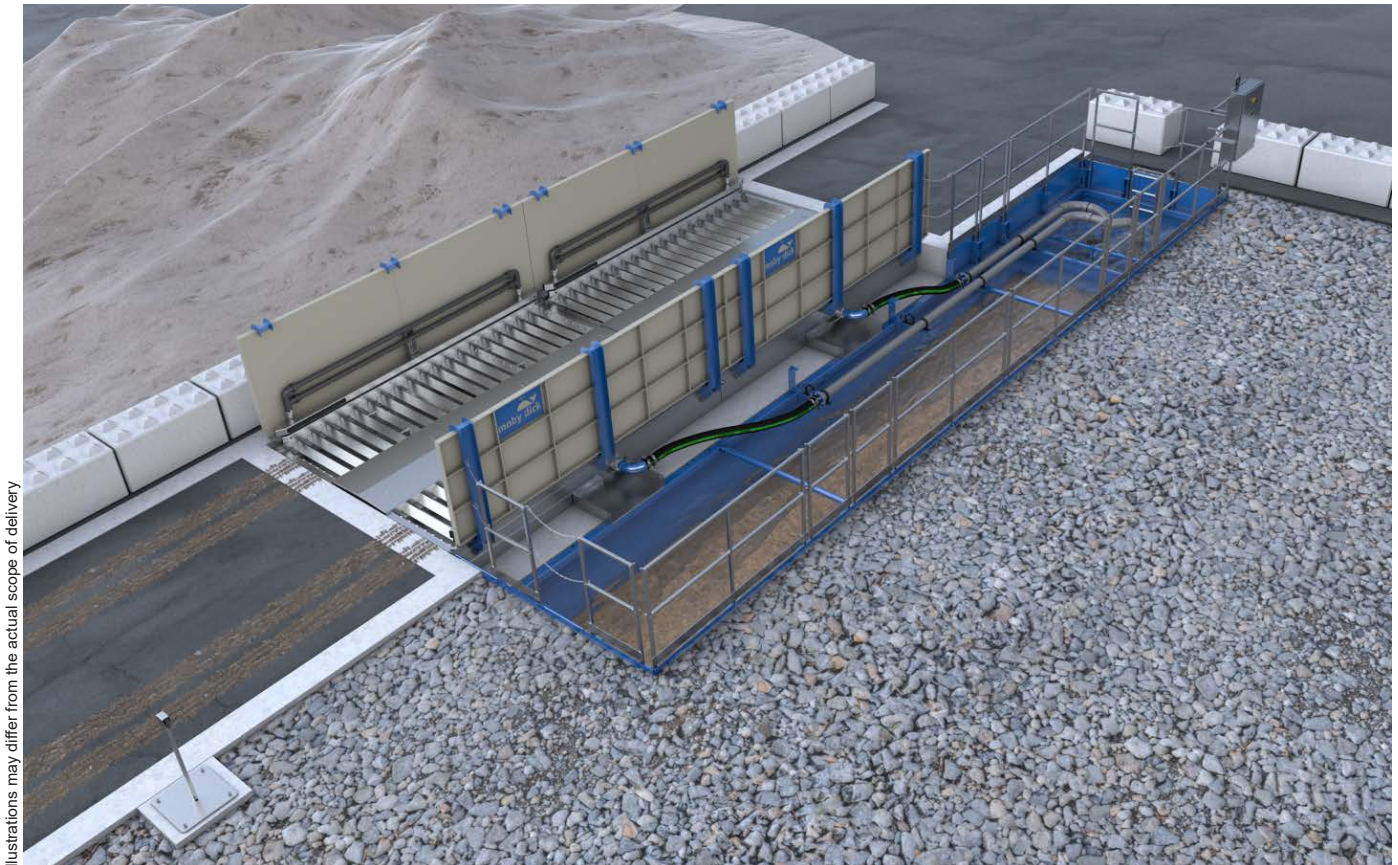
- Construction sites
- Gravel plants and quarries
- Concrete mixing plants
- Recycling facilities
- Landfill sites
- Port facilities
- Food industry
- Cleaning and disinfection
- Other areas on request

Wheel washing system

MobyDick ConLine KIT Plus 800 B-50P

Art. no. MDC-100-007

Hot-dip galvanized, water-bearing wash unit with splash guard walls, recycling tank, pump technology, and a control system.



Illustrations may differ from the actual scope of delivery

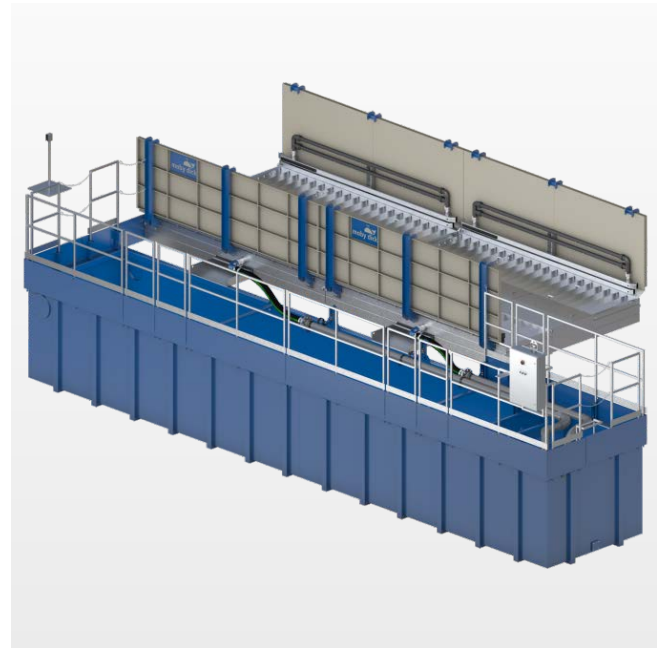
KIT Plus 800 B-50P – a model from the ConLine KIT Plus model line

ConLine KIT Plus – Greater performance for high demands

The ConLine KIT Plus line consists of a large selection of mobile and stationary wheel washing systems that are particularly suitable for use with high truck drive-through frequencies. These modern drive-through systems are based on more than 30 years of experience with wheel washing systems and, in addition to the classic MobyDick advantages, also offer a large choice of options and an attractive price/performance ratio. All ConLine KIT Plus systems are quick and easy to install and require only minimal maintenance.

Function description

A truck drives slowly into the wheel washing system. The vehicle identification sensor automatically triggers the washing process. The specially coordinated nozzle system, consisting of a large number of bottom and side nozzles, then ensures the intensive cleaning of all tires and the entire chassis in two wheel rotations. Higher vehicle areas such as windows and rear-view mirrors are not washed, so as to leave the driver's field of vision clear. The kneading effect created by the angle profiles gives the tire treads additional cleaning. The duration of the washing process can be freely selected using the timer relay in the control cabinet, in accordance with the relevant operating conditions. The waste water runs via the return channels from the wash units to the recycling tank on the side. This is where the washed-off solids settle out. The water is fed under a surge wall and over the partition wall with sieve insert into the pump chamber. There it is reused by the robust MobyPump immersion pump for further spraying. An excavator or suction vehicle removes the settled solids from the recycling tank.



Water recycling

In all MobyDick wheel washing systems the water is circulated in a closed circuit. Water treatment is via sedimentation in the recycling tank. Sedimentation can be accelerated by adding a flocculant. The solids that settle out in the recycling tank should be extracted with an excavator or suctioned out with a suction vehicle at regular intervals (depending on how frequently the system is used).

Scope of supply

- 2 hot-dip galvanized, water-bearing wash units
- Splash guard wall per side
- Double side nozzle bars per side
- Hot-dip galvanized return channel / wash unit for the waste water
- Control cabinet
- Optical sensor to trigger the washing process
- 4 MobyPump immersion pumps
- Pump bracket and piping
- Recycling tank 50 B with entry ladder
- Edge elevation on recycling tank to end at ground level
- Safety rail for link chains

Specifications (Dimensions see layout)

| | |
|--------------------------------|---------------|
| • Drive-through length | 2×157 in |
| • Passage width | 110 in |
| • Maximum axle load | 16.5 tons |
| • Splash guard wall height | 54 in |
| • Nozzles | 260 pcs. |
| • Nozzle Ø | 0.3 in |
| • Recycling tank volume | 13,200 gal |
| • Maximum pumping capacity | 4×660 gal/min |
| • Electrical connection values | 30,8 HP/55 A |
| • Sound emission | < 75 dB |
| • Weight (ready to ship) | 25,350 lbs |

Fields of application

The KIT Plus 800 B-50P model can wash 200 to 250 highly soiled trucks per day.

Typical operation sites – depending on the number of trucks and degree of soiling – are

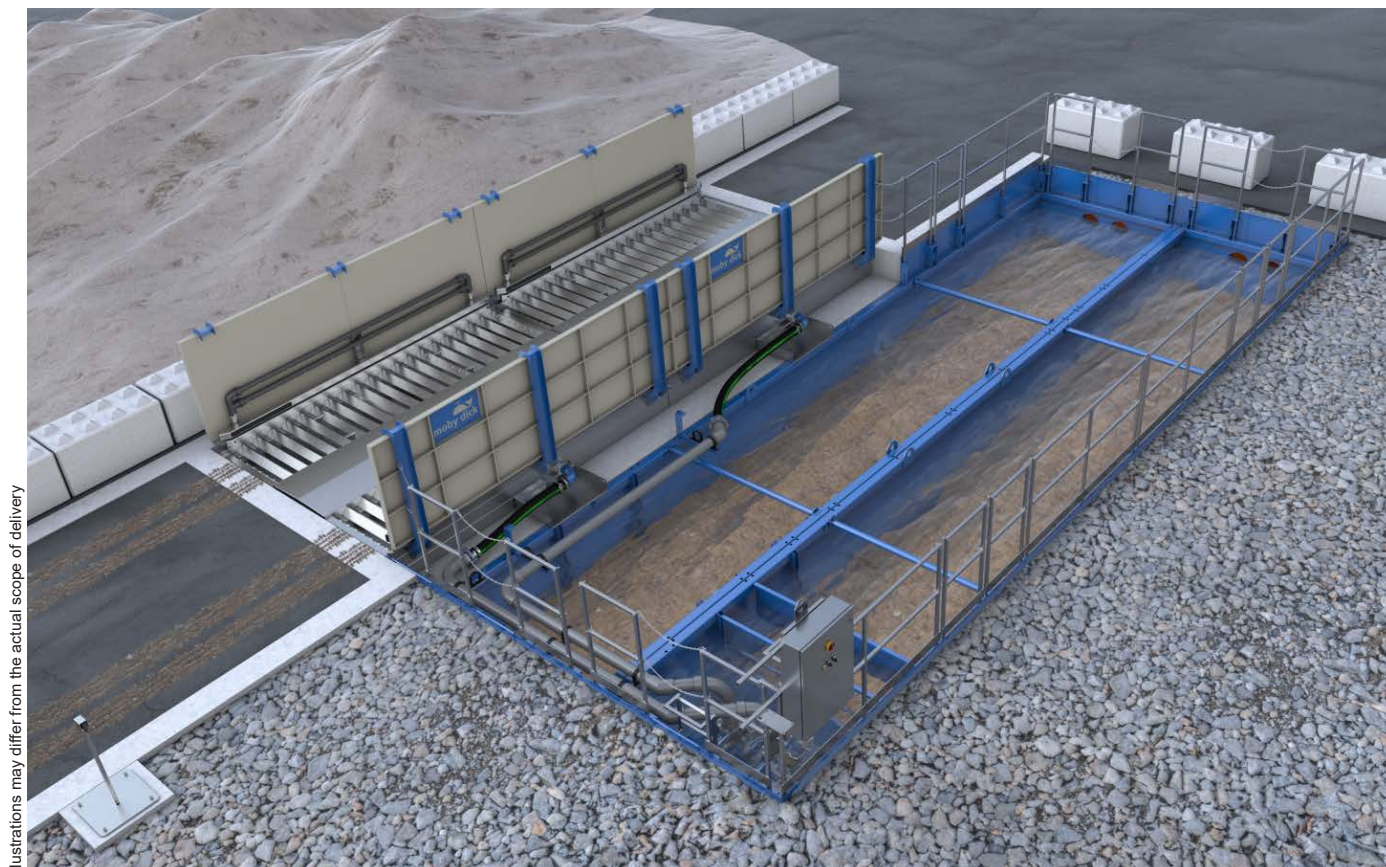
- Construction sites
- Gravel plants and quarries
- Concrete mixing plants
- Recycling facilities
- Landfill sites
- Port facilities
- Food industry
- Cleaning and disinfection
- Other areas on request

Wheel washing system

MobyDick ConLine KIT Plus 800 B-100P

Art. no. MDC-100-008

Hot-dip galvanized, water-bearing wash unit with splash guard walls, recycling tank, pump technology, and a control system.



Illustrations may differ from the actual scope of delivery

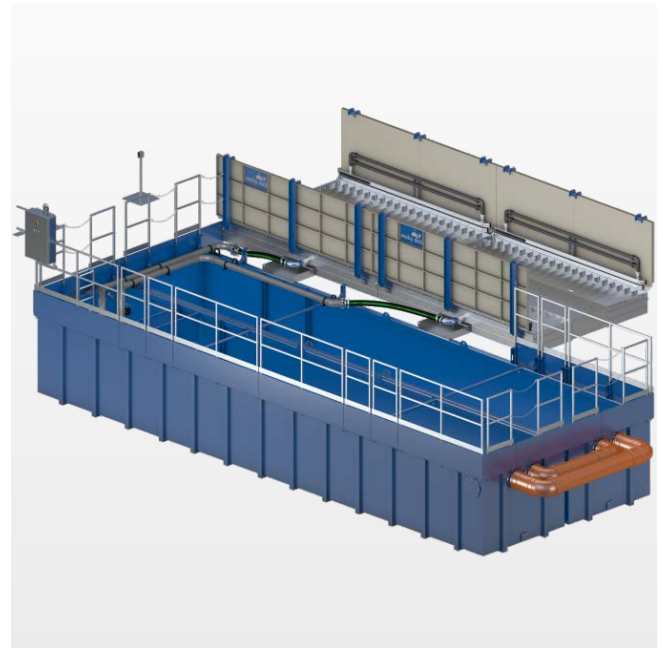
KIT Plus 800 B-100P – a model from the ConLine KIT Plus model line

ConLine KIT Plus – Greater performance for high demands

The ConLine KIT Plus line consists of a large selection of mobile and stationary wheel washing systems that are particularly suitable for use with high truck drive-through frequencies. These modern drive-through systems are based on more than 30 years of experience with wheel washing systems and, in addition to the classic MobyDick advantages, also offer a large choice of options and an attractive price/performance ratio. All ConLine KIT Plus systems are quick and easy to install and require only minimal maintenance.

Function description

A truck drives slowly into the wheel washing system. The vehicle identification sensor automatically triggers the washing process. The specially coordinated nozzle system, consisting of a large number of bottom and side nozzles, then ensures the intensive cleaning of all tires and the entire chassis in two wheel rotations. Higher vehicle areas such as windows and rear-view mirrors are not washed, so as to leave the driver's field of vision clear. The kneading effect created by the angle profiles gives the tire treads additional cleaning. The duration of the washing process can be freely selected using the timer relay in the control cabinet, in accordance with the relevant operating conditions. The waste water runs via the return channels from the wash units to the recycling tanks on the side. This is where the washed-off solids settle out. The water is fed under a surge wall and over the partition wall with sieve insert into the pump chamber. There it is reused by the robust MobyPump immersion pump for further spraying. An excavator or suction vehicle removes the settled solids from the recycling tanks.



Water recycling

In all MobyDick wheel washing systems the water is circulated in a closed circuit. Water treatment is via sedimentation in the recycling tank. Sedimentation can be accelerated by adding a flocculant. The solids that settle out in the recycling tank should be extracted with an excavator or suctioned out with a suction vehicle at regular intervals (depending on how frequently the system is used).

Scope of supply

- 2 hot-dip galvanized, water-bearing wash units
- Splash guard wall per side
- Double side nozzle bars per side
- Hot-dip galvanized return channel / wash unit for the waste water
- Control cabinet
- Optical sensor to trigger the washing process
- 4 MobyPump immersion pumps
- Pump bracket and piping
- 2 recycling tanks 50 B with entry ladder
- Edge elevation on recycling tank to end at ground level
- Safety rail for link chains

Specifications (Dimensions see layout)

| | |
|--------------------------------|---------------|
| • Drive-through length | 2×157 in |
| • Passage width | 110 in |
| • Maximum axle load | 16.5 tons |
| • Splash guard wall height | 54 in |
| • Nozzles | 260 pcs. |
| • Nozzle Ø | 0.3 in |
| • Recycling tank volume | 2×13,200 gal |
| • Maximum pumping capacity | 4×660 gal/min |
| • Electrical connection values | 30.8 HP/55 A |
| • Sound emission | < 75 dB |
| • Weight (ready to ship) | 35,300 lbs |

Fields of application

The KIT Plus 800 B-100P model can wash 300 to 350 highly soiled trucks per day.

Typical operation sites – depending on the number of trucks and degree of soiling – are

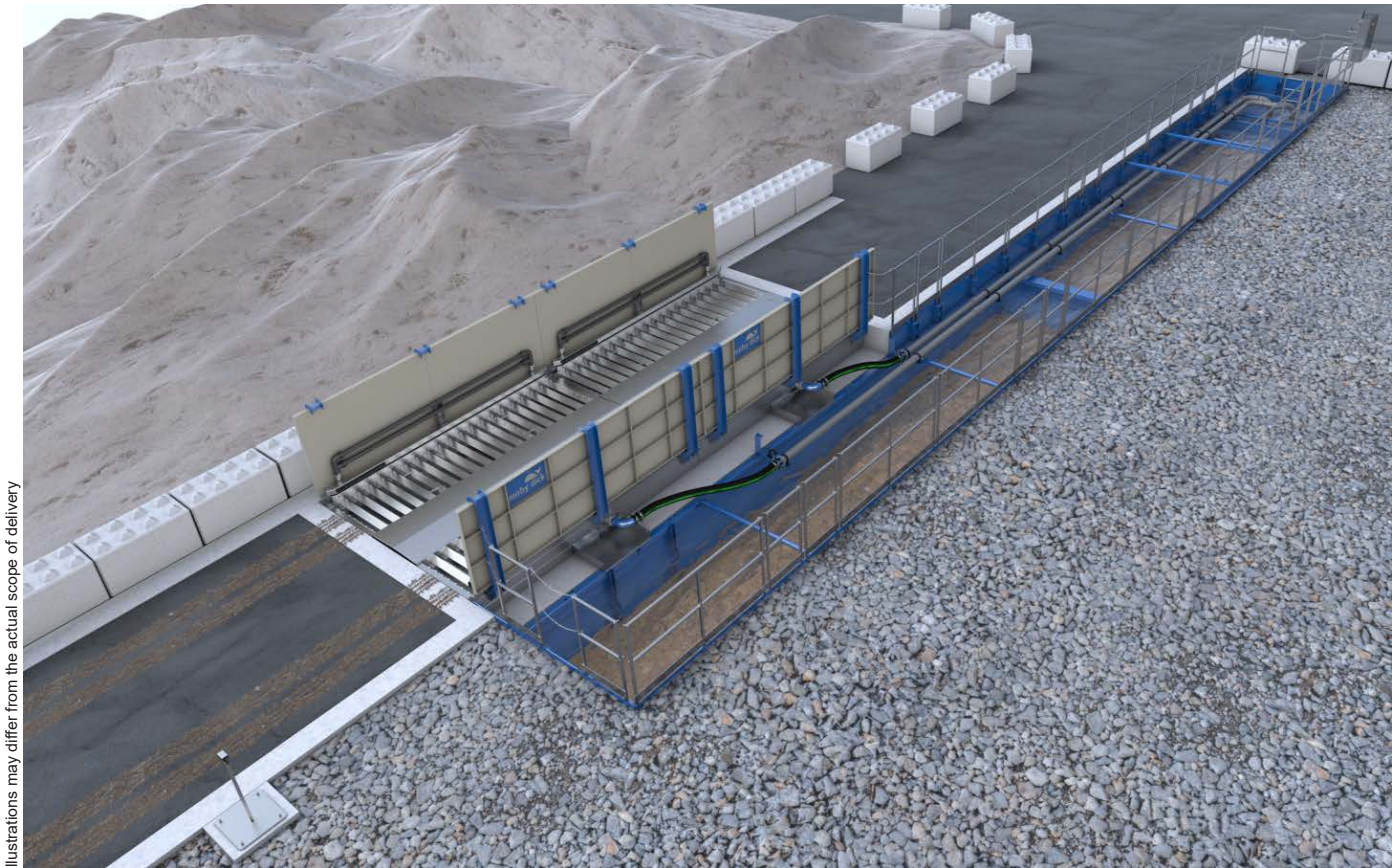
- Construction sites
- Gravel plants and quarries
- Concrete mixing plants
- Recycling facilities
- Landfill sites
- Port facilities
- Food industry
- Cleaning and disinfection
- Other areas on request

Wheel washing system

MobyDick ConLine KIT Plus 800 B-100S

Art. no. MDC-100-009

Hot-dip galvanized, water-bearing wash unit with splash guard walls, recycling tank, pump technology, and a control system.



Illustrations may differ from the actual scope of delivery

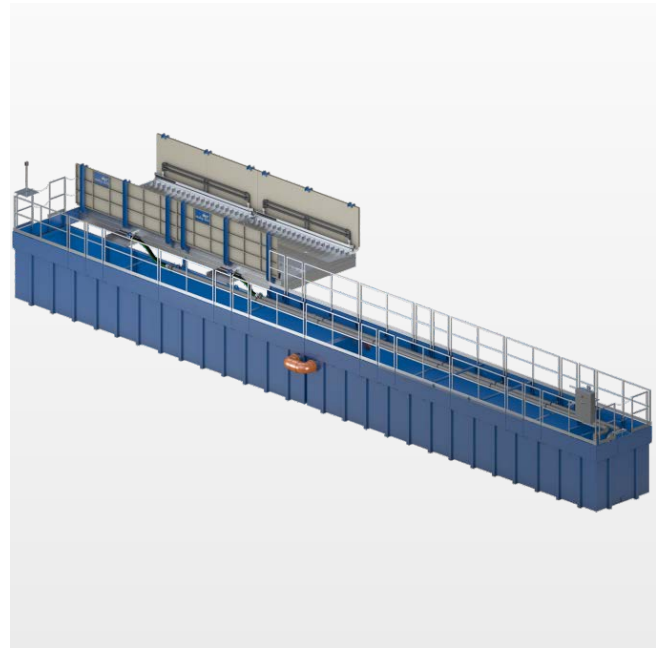
KIT Plus 800 B-100S – a model from the ConLine KIT Plus model line

ConLine KIT Plus – Greater performance for high demands

The ConLine KIT Plus line consists of a large selection of mobile and stationary wheel washing systems that are particularly suitable for use with high truck drive-through frequencies. These modern drive-through systems are based on more than 30 years of experience with wheel washing systems and, in addition to the classic MobyDick advantages, also offer a large choice of options and an attractive price/performance ratio. All ConLine KIT Plus systems are quick and easy to install and require only minimal maintenance.

Function description

A truck drives slowly into the wheel washing system. The vehicle identification sensor automatically triggers the washing process. The specially coordinated nozzle system, consisting of a large number of bottom and side nozzles, then ensures the intensive cleaning of all tires and the entire chassis in two wheel rotations. Higher vehicle areas such as windows and rear-view mirrors are not washed, so as to leave the driver's field of vision clear. The kneading effect created by the angle profiles gives the tire treads additional cleaning. The duration of the washing process can be freely selected using the timer relay in the control cabinet, in accordance with the relevant operating conditions. The waste water runs via the return channels from the wash units to the recycling tanks on the side. This is where the washed-off solids settle out. The water is fed under a surge wall and over the partition wall with sieve insert into the pump chamber. There it is reused by the robust MobyPump immersion pump for further spraying. An excavator or suction vehicle removes the settled solids from the recycling tanks.



Water recycling

In all MobyDick wheel washing systems the water is circulated in a closed circuit. Water treatment is via sedimentation in the recycling tank. Sedimentation can be accelerated by adding a flocculant. The solids that settle out in the recycling tank should be extracted with an excavator or suctioned out with a suction vehicle at regular intervals (depending on how frequently the system is used).

Scope of supply

- 2 hot-dip galvanized, water-bearing wash units
- Splash guard wall per side
- Double side nozzle bars per side
- Hot-dip galvanized return channel / wash unit for the waste water
- Control cabinet
- Optical sensor to trigger the washing process
- 4 MobyPump immersion pumps
- Pump bracket and piping
- 2 recycling tanks 50 B with entry ladder
- Edge elevation on recycling tank to end at ground level
- Safety rail for link chains

Specifications (Dimensions see layout)

| | |
|--------------------------------|---------------|
| • Drive-through length | 2×157 in |
| • Passage width | 110 in |
| • Maximum axle load | 16.5 tons |
| • Splash guard wall height | 54 in |
| • Nozzles | 260 pcs. |
| • Nozzle Ø | 0.3 in |
| • Recycling tank volume | 2×13,200 gal |
| • Maximum pumping capacity | 4×660 gal/min |
| • Electrical connection values | 30.8 HP/55 A |
| • Sound emission | < 75 dB |
| • Weight (ready to ship) | 35,300 lbs |

Fields of application

The KIT Plus 800 B-100S model can wash 300 to 350 highly soiled trucks per day.

Typical operation sites – depending on the number of trucks and degree of soiling – are

- Construction sites
- Gravel plants and quarries
- Concrete mixing plants
- Recycling facilities
- Landfill sites
- Port facilities
- Food industry
- Cleaning and disinfection
- Other areas on request

Wheel washing system

MobyDick ConLine KIT Plus 400 C-50P

Art. no. MDC-100-010

Galvanized, water-bearing wash unit with splash guard walls, recycling tank with scraper conveyor, pump technology, and a control system.



Illustrations may differ from the actual scope of delivery

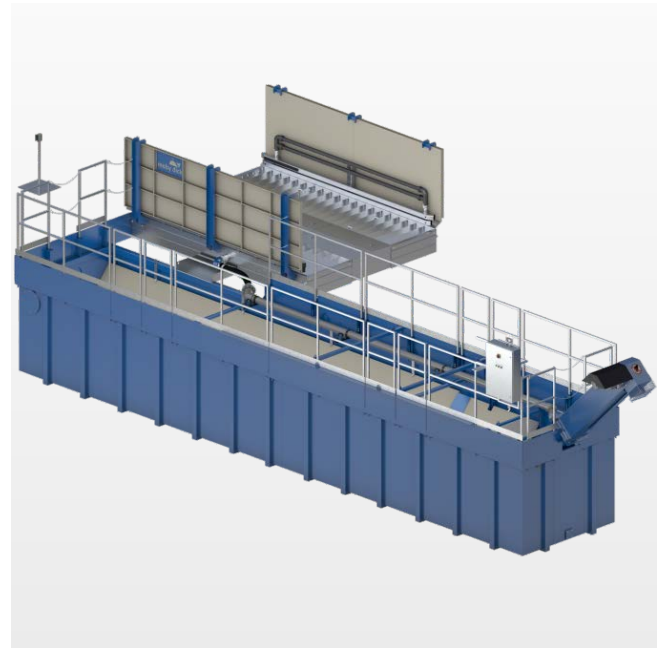
KIT Plus 400 C-50P – a model from the ConLine KIT Plus model line

ConLine KIT Plus – Greater performance for high demands

The ConLine KIT Plus line consists of a large selection of mobile and stationary wheel washing systems that are particularly suitable for use with high truck drive-through frequencies. These modern drive-through systems are based on more than 30 years of experience with wheel washing systems and, in addition to the classic MobyDick advantages, also offer a large choice of optional feature and an attractive price/performance ratio. All ConLine KIT Plus systems are quick and easy to install and require only minimal maintenance.

Function description

A truck drives slowly into the wheel washing system. The vehicle identification sensor automatically triggers the washing process. The specially coordinated nozzle system, consisting of a large number of bottom and side nozzles, then ensures the intensive cleaning of all tires and the entire chassis in one wheel rotation. Higher vehicle areas such as windows and rear-view mirrors are not washed, so as to leave the driver's field of vision clear. The kneading effect created by the angle profiles gives the tire treads additional cleaning. The duration of the washing process can be freely selected using the timer relay in the control cabinet, in accordance with the relevant operating conditions. The waste water runs via the return channel from the wash unit to the side recycling tank. This is where the washed-off solids settle out. The water is fed via the partition wall with sieve insert into the pump chamber. There it is reused by a robust MobyPump immersion pump for further spraying. The scraper conveyor conveys settled solids out of the recycling tank.



Water recycling

In all MobyDick wheel washing systems the water is circulated in a closed circuit. Water treatment is via sedimentation in the recycling tank. Sedimentation can be accelerated by adding a flocculant. Settled solids are continuously conveyed out of the recycling tank by the scraper conveyor.

Scope of supply

- Galvanized, water-bearing wash unit
- Splash guard wall per side
- Double side nozzle bars per side
- Hot-galvanized return channel for the waste water
- Control cabinet
- Optical sensor to trigger the washing process
- 2 MobyPump immersion pumps
- Pump bracket and piping
- Recycling tank 50 C with scraper conveyor
- Edge elevation on recycling tank to end at ground level

Specifications (For dimensions see layout drawing)

| | |
|--------------------------------|---------------|
| • Drive-through length | 157 in |
| • Drive-through width | 110 in |
| • Maximum axle load | 16.5 tons |
| • Splash guard wall height | 54 in |
| • Nozzles | 130 pcs. |
| • Nozzle Ø | 0.3 in |
| • Recycling tank volume | 13,200 gal |
| • Maximum pumping capacity | 2×660 gal/min |
| • Electrical connection values | 16 HP/30 A |
| • Sound emission | <75 dB |
| • Weight (ready to ship) | 20,950 lbs |

Areas of application

The KIT Plus 400 C-50P model can wash up to 250 moderately soiled trucks per day.

Typical operation sites – depending on the number of trucks and degree of soiling – are

- Construction sites
- Gravel plants and quarries
- Concrete mixing plants
- Recycling facilities
- Landfill sites
- Port facilities
- Food industry
- Cleaning and disinfection
- Other areas on request

Wheel washing system

MobyDick ConLine KIT Plus 400 C-50Q

Art. no. MDC-100-011

Hot-dip galvanized, water-bearing wash unit with splash guard walls, recycling tank with scraper conveyor, pump technology, and a control system.



Illustrations may differ from the actual scope of delivery

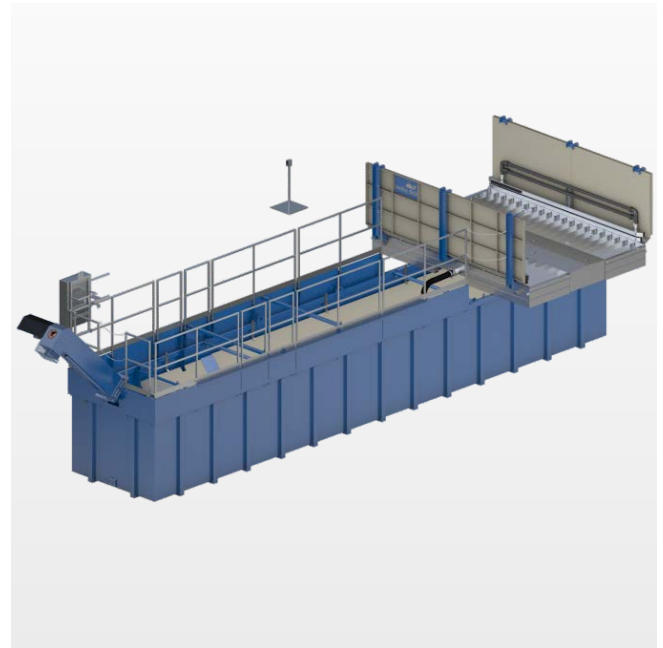
KIT Plus 400 C-50Q – a model from the ConLine KIT Plus model line

ConLine KIT Plus – Greater performance for high demands

The ConLine KIT Plus line consists of a large selection of mobile and stationary wheel washing systems that are particularly suitable for use with high truck drive-through frequencies. These modern drive-through systems are based on more than 30 years of experience with wheel washing systems and, in addition to the classic MobyDick advantages, also offer a large choice of options and an attractive price/performance ratio. All ConLine KIT Plus systems are quick and easy to install and require only minimal maintenance.

Function description

A truck drives slowly into the wheel washing system. The vehicle identification sensor automatically triggers the washing process. The specially coordinated nozzle system, consisting of a large number of bottom and side nozzles, then ensures the intensive cleaning of all tires and the entire chassis in one wheel rotation. Higher vehicle areas such as windows and rear-view mirrors are not washed, so as to leave the driver's field of vision clear. The kneading effect created by the angle profiles gives the tire treads additional cleaning. The duration of the washing process can be freely selected using the timer relay in the control cabinet, in accordance with the relevant operating conditions. The waste water runs from the wash unit directly into the recycling tank below. This is where the washed-off solids settle out. The water is fed via the partition wall with sieve insert into the pump chamber. There it is reused by the robust MobyPump immersion pump for further spraying. The scraper conveyor conveys settled solids out of the recycling tank.



Water recycling

In all MobyDick wheel washing systems the water is circulated in a closed circuit. Water treatment is via sedimentation in the recycling tank. Sedimentation can be accelerated by adding a flocculant. Settled solids are continuously conveyed out of the recycling tank by the scraper conveyor.

Scope of supply

- Hot-dip galvanized, water-bearing wash unit
- Splash guard wall per side
- Double side nozzle bars per side
- Control cabinet
- Optical sensor to trigger the washing process
- 2 MobyPump immersion pumps
- Pump bracket and piping
- Recycling tank 50 C with scraper conveyor
- Edge elevation on recycling tank to end at ground level

Specifications (Dimensions see layout)

| | |
|--------------------------------|---------------|
| • Drive-through length | 157 in |
| • Passage width | 110 in |
| • Maximum axle load | 16.5 tons |
| • Splash guard wall height | 54 in |
| • Nozzles | 130 pcs. |
| • Nozzle Ø | 0.3 in |
| • Recycling tank volume | 13,200 gal |
| • Maximum pumping capacity | 2×660 gal/min |
| • Electrical connection values | 16 HP/30 A |
| • Sound emission | < 75 dB |
| • Weight (ready to ship) | 20,950 lbs |

Fields of application

The KIT Plus 400 C-50Q model can wash up to 250 moderately soiled trucks per day.

Typical operation sites – depending on the number of trucks and degree of soiling – are

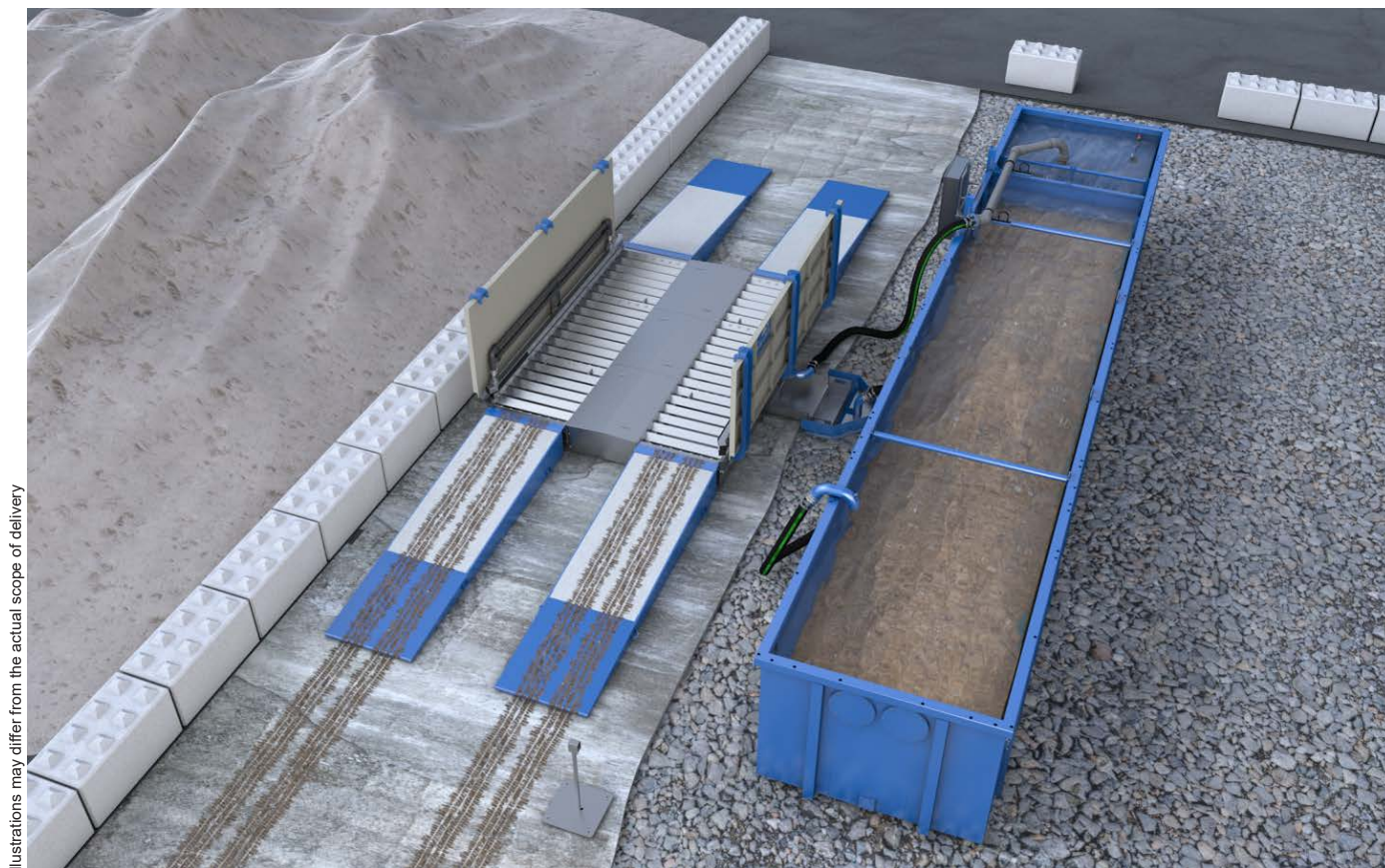
- Construction sites
- Gravel plants and quarries
- Concrete mixing plants
- Recycling facilities
- Landfill sites
- Port facilities
- Food industry
- Cleaning and disinfection
- Other areas on request

Wheel washing system

MobyDick ConLine KIT Plus 400 MB-50P

Art. no. MDC-100-012

Mobile, hot-dip galvanized, water-bearing wash unit with splash guard walls, pump sump tank, recycling tank, pump technology, solid concrete ramps, and a control system.



Illustrations may differ from the actual scope of delivery

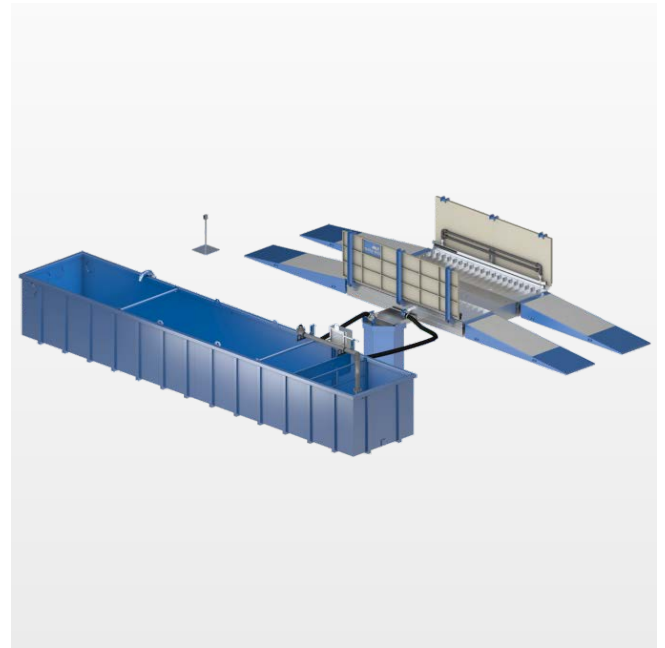
KIT Plus 400 MB-50P – a model from the ConLine KIT Plus model line

ConLine KIT Plus – Greater performance for high demands

The ConLine KIT Plus line consists of a large selection of mobile and stationary wheel washing systems that are particularly suitable for use with high truck drive-through frequencies. These modern drive-through systems are based on more than 30 years of experience with wheel washing systems and, in addition to the classic MobyDick advantages, also offer a large choice of options and an attractive price/performance ratio. All ConLine KIT Plus systems are quick and easy to install and require only minimal maintenance.

Function description

A truck drives slowly up the ramps into the wheel washing system. The vehicle identification sensor automatically triggers the washing process. The specially coordinated nozzle system, consisting of a large number of bottom and side nozzles, then ensures the intensive cleaning of all tires and the entire chassis in one wheel rotation. Higher vehicle areas such as windows and rear-view mirrors are not washed, so as to leave the driver's field of vision clear. The kneading effect created by the angle profiles gives the tire treads additional cleaning. The duration of the washing process can be freely selected using the timer relay in the control cabinet, in accordance with the relevant operating conditions. The waste water runs via the return channel from the wash unit to the side pump sump tank. From there it is pumped into the recycling tank by the MobyPump macerating pump. This is where the washed-off solids settle out. The water is fed under a surge wall and over the partition wall with sieve insert into the pump chamber. There it is recycled for further spraying by a robust MobyPump immersion pump. An excavator or suction vehicle removes the settled solids from the recycling tank.



Water recycling

In all MobyDick wheel washing systems the water is circulated in a closed circuit. Water treatment is via sedimentation in the recycling tank. Sedimentation can be accelerated by adding a flocculant. The solids that settle out in the recycling tank should be extracted with an excavator or suctioned out with a suction vehicle at regular intervals (depending on how frequently the system is used).

Scope of supply

- Hot-dip galvanized, water-bearing wash unit
- Splash guard wall per side
- Double side nozzle bars per side
- Hot-dip galvanized return channel for the waste water
- Control cabinet
- Optical sensor to trigger the washing process
- 1 MobyPump immersion pump
- 1 MobyPump macerating pump
- Pump bracket and piping
- Recycling tank 50 B
- Pump sump tank
- 4 ramps to the wash unit

Specifications (Dimensions see layout)

| | |
|--------------------------------|---------------|
| • Drive-through length | 157 in |
| • Passage width | 110 in |
| • Maximum axle load | 16.5 tons |
| • Splash guard wall height | 54 in |
| • Nozzles | 130 pcs. |
| • Nozzle Ø | 0.3 in |
| • Recycling tank volume | 13,200 gal |
| • Maximum pumping capacity | 2×660 gal/min |
| • Electrical connection values | 16 HP kW/30 A |
| • Sound emission | < 75 dB |
| • Weight (ready to ship) | 33,100 lbs |

Fields of application

The KIT Plus 400 MB-50P model can wash up to 250 moderately soiled trucks per day.

Typical operation sites – depending on the number of trucks and degree of soiling – are

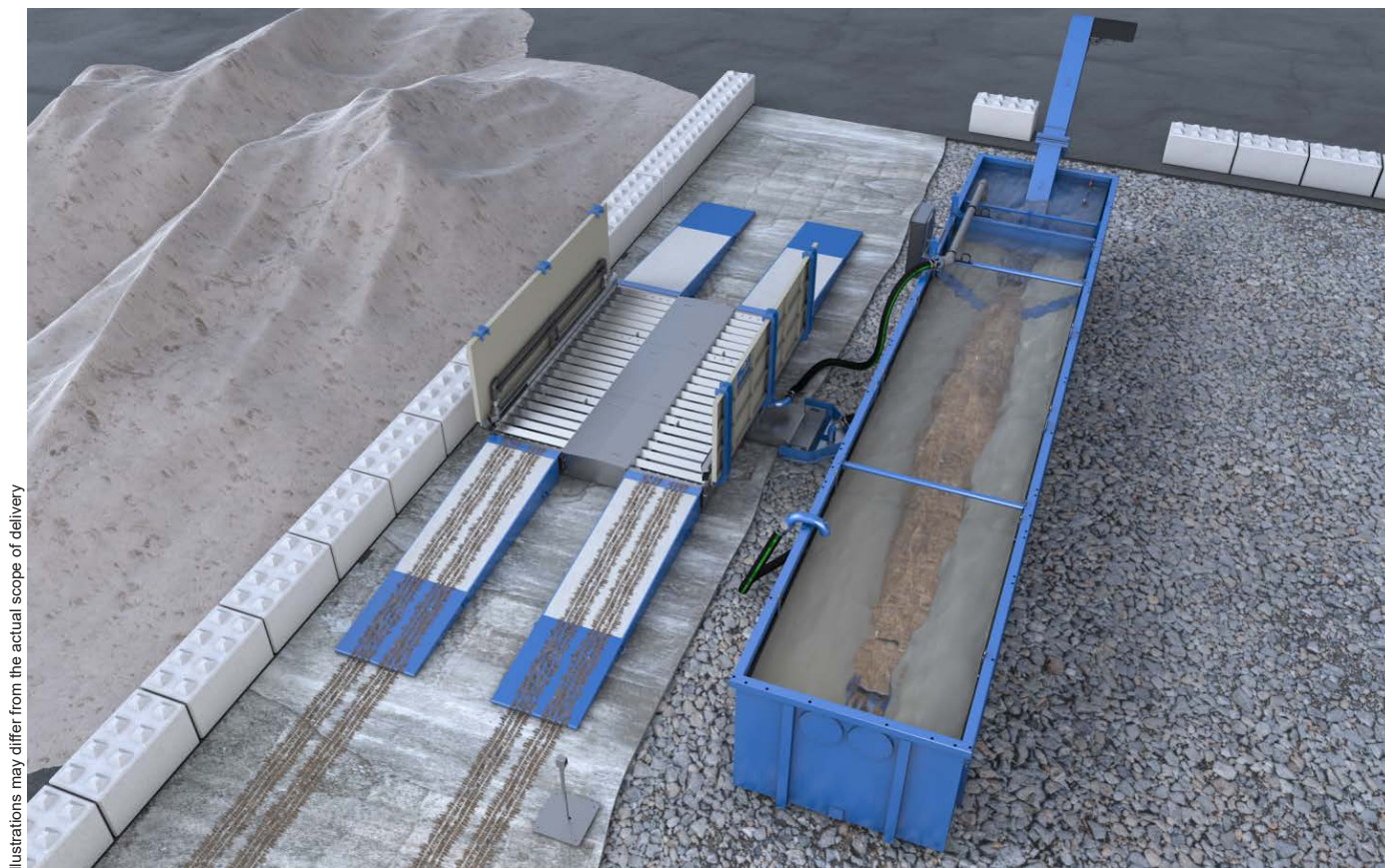
- Construction sites
- Gravel plants and quarries
- Concrete mixing plants
- Recycling facilities
- Landfill sites
- Port facilities
- Food industry
- Cleaning and disinfection
- Other areas on request

Wheel washing system

MobyDick ConLine KIT Plus 400 MC-50P

Art. no. MDC-100-013

Mobile, hot-dip galvanized, water-bearing wash unit with splash guard walls, pump sump tank, recycling tank with scraper conveyor, pump technology, solid concrete ramps, and a control system.



Illustrations may differ from the actual scope of delivery

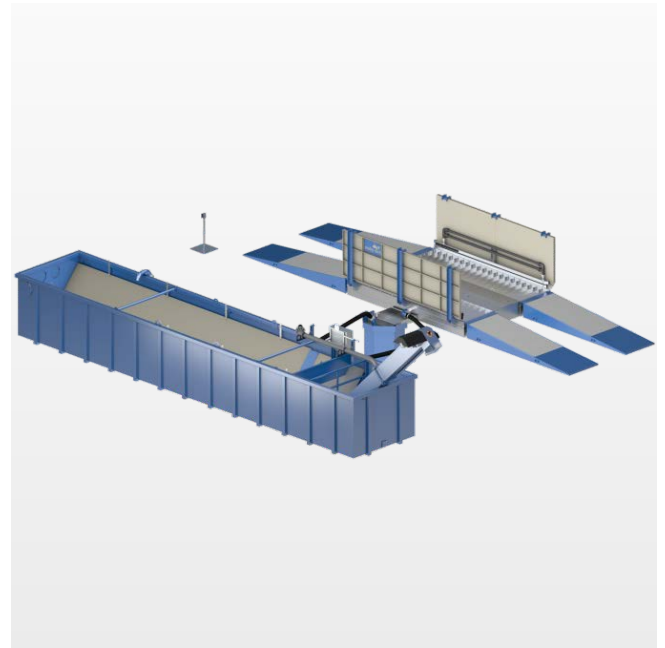
KIT Plus 400 MC-50P – a model from the ConLine KIT Plus model line

ConLine KIT Plus – Greater performance for high demands

The ConLine KIT Plus line consists of a large selection of mobile and stationary wheel washing systems that are particularly suitable for use with high truck drive-through frequencies. These modern drive-through systems are based on more than 30 years of experience with wheel washing systems and, in addition to the classic MobyDick advantages, also offer a large choice of options and an attractive price/performance ratio. All ConLine KIT Plus systems are quick and easy to install and require only minimal maintenance.

Function description

A truck drives slowly up the ramps into the wheel washing system. The vehicle identification sensor automatically triggers the washing process. The specially coordinated nozzle system, consisting of a large number of bottom and side nozzles, then ensures the intensive cleaning of all tires and the entire chassis in one wheel rotation. Higher vehicle areas such as windows and rear-view mirrors are not washed, so as to leave the driver's field of vision clear. The kneading effect created by the angle profiles gives the tire treads additional cleaning. The duration of the washing process can be freely selected using the timer relay in the control cabinet, in accordance with the relevant operating conditions. The waste water runs via the return channel from the wash unit to the side pump sump tank. From there it is pumped into the recycling tank by the MobyPump macerating pump. This is where the washed-off solids settle out. The water is fed via the partition wall with sieve insert into the pump chamber. There it is recycled for further spraying by a robust MobyPump immersion pump. The scraper conveyor conveys settled solids out of the recycling tank.



Water recycling

In all MobyDick wheel washing systems the water is circulated in a closed circuit. Water treatment is via sedimentation in the recycling tank. Sedimentation can be accelerated by adding a flocculant. Settled solids are continuously conveyed out of the recycling tank by the scraper conveyor.

Scope of supply

- Hot-dip galvanized, water-bearing wash unit
- Splash guard wall per side
- Double side nozzle bars per side
- Hot-dip galvanized return channel for the waste water
- Control cabinet
- Optical sensor to trigger the washing process
- 1 MobyPump immersion pump
- 1 MobyPump macerating pump
- Pump bracket and piping
- Recycling tank 50 C with scraper conveyor
- Pump sump tank
- 4 ramps to the wash unit

Specifications (Dimensions see layout)

| | |
|--------------------------------|---------------|
| • Drive-through length | 157 in |
| • Passage width | 110 in |
| • Maximum axle load | 16.5 tons |
| • Splash guard wall height | 54 in |
| • Nozzles | 130 pcs. |
| • Nozzle Ø | 0.3 in |
| • Recycling tank volume | 13,200 gal |
| • Maximum pumping capacity | 2×660 gal/min |
| • Electrical connection values | 16 kW/30 A |
| • Sound emission | < 75 dB |
| • Weight (ready to ship) | 36,400 lbs |

Fields of application

The KIT Plus 400 MC-50P model can wash up to 250 moderately soiled trucks per day.

Typical operation sites – depending on the number of trucks and degree of soiling – are

- Construction sites
- Gravel plants and quarries
- Concrete mixing plants
- Recycling facilities
- Landfill sites
- Port facilities
- Food industry
- Cleaning and disinfection
- Other areas on request

Wheel washing system

MobyDick ConLine KIT Plus 600 C-50P

Art. no. MDC-100-014

Hot-dip galvanized, water-bearing wash unit with splash guard walls, recycling tank with scraper conveyor, pump technology, and a control system.



Illustrations may differ from the actual scope of delivery

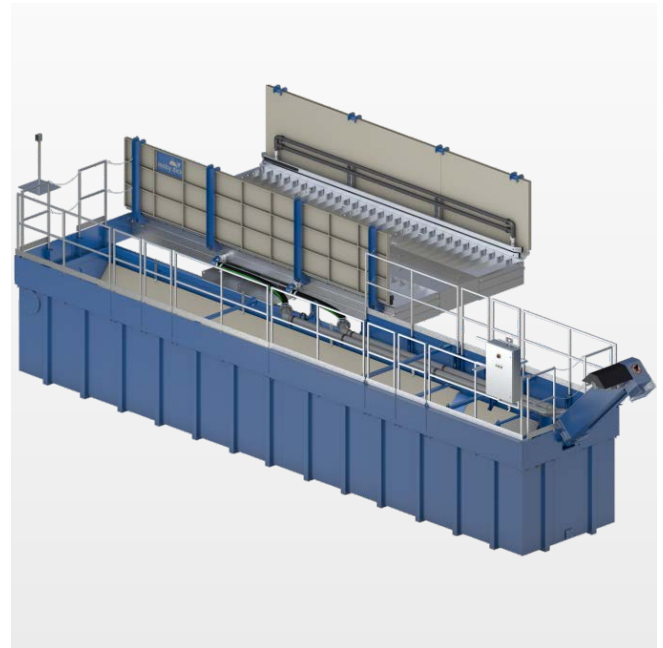
KIT Plus 600 C-50P – a model from the ConLine KIT Plus model line

ConLine KIT Plus – Greater performance for high demands

The ConLine KIT Plus line consists of a large selection of mobile and stationary wheel washing systems that are particularly suitable for use with high truck drive-through frequencies. These modern drive-through systems are based on more than 30 years of experience with wheel washing systems and, in addition to the classic MobyDick advantages, also offer a large choice of options and an attractive price/performance ratio. All ConLine KIT Plus systems are quick and easy to install and require only minimal maintenance.

Function description

A truck drives slowly into the wheel washing system. The vehicle identification sensor automatically triggers the washing process. The specially coordinated nozzle system, consisting of a large number of bottom and side nozzles, then ensures the intensive cleaning of all tires and the entire chassis in just over one wheel rotation. Higher vehicle areas such as windows and rear-view mirrors are not washed, so as to leave the driver's field of vision clear. The kneading effect created by the angle profiles gives the tire treads additional cleaning. The duration of the washing process can be freely selected using the timer relay in the control cabinet, in accordance with the relevant operating conditions. The waste water runs via the return channel from the wash unit to the recycling tank on the side. This is where the washed-off solids settle out. The water is fed via the partition wall with sieve insert into the pump chamber. There it is reused by the robust MobyPump immersion pump for further spraying. The scraper conveyor conveys settled solids out of the recycling tank.



Water recycling

In all MobyDick wheel washing systems the water is circulated in a closed circuit. Water treatment is via sedimentation in the recycling tank. Sedimentation can be accelerated by adding a flocculant. Settled solids are continuously conveyed out of the recycling tank by the scraper conveyor.

Scope of supply

- Hot-dip galvanized, water-bearing wash unit
- Splash guard wall per side
- Double side nozzle bars per side
- 2 hot-dip galvanized return channels for the waste water
- Control cabinet
- Optical sensor to trigger the washing process
- 3 MobyPump immersion pumps
- Pump bracket and piping
- Recycling tank 50 C with scraper conveyor
- Edge elevation on recycling tank to end at ground level

Specifications (Dimensions see layout)

| | |
|--------------------------------|---------------|
| • Drive-through length | 236 in |
| • Passage width | 110 in |
| • Maximum axle load | 16.5 tons |
| • Splash guard wall height | 54 in |
| • Nozzles | 226 pcs. |
| • Nozzle Ø | 0.3 in |
| • Recycling tank volume | 13,200 gal |
| • Maximum pumping capacity | 3×660 gal/min |
| • Electrical connection values | 23.5 HP/40 A |
| • Sound emission | < 75 dB |
| • Weight (ready to ship) | 24,250 lbs |

Fields of application

The KIT Plus 600 C-50P model can wash up to 250 moderately soiled trucks per day.

Typical operation sites – depending on the number of trucks and degree of soiling – are

- Construction sites
- Gravel plants and quarries
- Concrete mixing plants
- Recycling facilities
- Landfill sites
- Port facilities
- Food industry
- Cleaning and disinfection
- Other areas on request

Wheel washing system

MobyDick ConLine KIT Plus 600 C-50Q

Art. no. MDC-100-015

Hot-dip galvanized, water-bearing wash unit with splash guard walls, recycling tank with scraper conveyor, pump technology, and a control system.



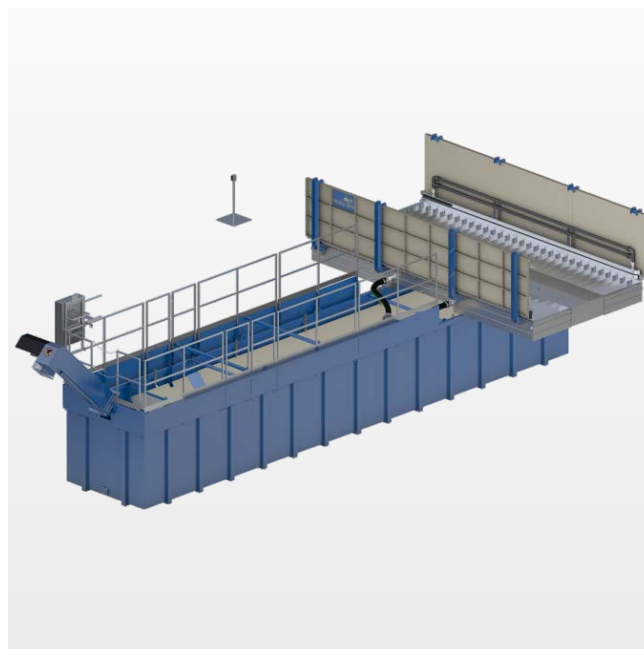
KIT Plus 600 C-50Q – a model from the ConLine KIT Plus model line

ConLine KIT Plus – Greater performance for high demands

The ConLine KIT Plus line consists of a large selection of mobile and stationary wheel washing systems that are particularly suitable for use with high truck drive-through frequencies. These modern drive-through systems are based on more than 30 years of experience with wheel washing systems and, in addition to the classic MobyDick advantages, also offer a large choice of options and an attractive price/performance ratio. All ConLine KIT Plus systems are quick and easy to install and require only minimal maintenance.

Function description

A truck drives slowly into the wheel washing system. The vehicle identification sensor automatically triggers the washing process. The specially coordinated nozzle system, consisting of a large number of bottom and side nozzles, then ensures the intensive cleaning of all tires and the entire chassis in just over one wheel rotation. Higher vehicle areas such as windows and rear-view mirrors are not washed, so as to leave the driver's field of vision clear. The kneading effect created by the angle profiles gives the tire treads additional cleaning. The duration of the washing process can be freely selected using the timer relay in the control cabinet, in accordance with the relevant operating conditions. The waste water runs from the wash unit directly into the recycling tank below. This is where the washed-off solids settle out. The water is fed via the partition wall with sieve insert into the pump chamber. There it is reused by the robust MobyPump immersion pump for further spraying. The scraper conveyor conveys settled solids out of the recycling tank.



Water recycling

In all MobyDick wheel washing systems the water is circulated in a closed circuit. Water treatment is via sedimentation in the recycling tank. Sedimentation can be accelerated by adding a flocculant. Settled solids are continuously conveyed out of the recycling tank by the scraper conveyor.

Scope of supply

- Hot-dip galvanized, water-bearing wash unit
- Splash guard wall per side
- Double side nozzle bars per side
- Control cabinet
- Optical sensor to trigger the washing process
- 3 MobyPump immersion pumps
- Pump bracket and piping
- Recycling tank 50 C with scraper conveyor
- Edge elevation on recycling tank to end at ground level

Specifications (Dimensions see layout)

| | |
|--------------------------------|---------------|
| • Drive-through length | 236 in |
| • Passage width | 110 in |
| • Maximum axle load | 16.5 tons |
| • Splash guard wall height | 54 in |
| • Nozzles | 226 pcs. |
| • Nozzle Ø | 0.3 in |
| • Recycling tank volume | 13,200 gal |
| • Maximum pumping capacity | 3×660 gal/min |
| • Electrical connection values | 23.5 HP/40 A |
| • Sound emission | < 75 dB |
| • Weight (ready to ship) | 24,250 lbs |

Fields of application

The KIT Plus 600 C-50Q model can wash up to 250 moderately soiled trucks per day.

Typical operation sites – depending on the number of trucks and degree of soiling – are

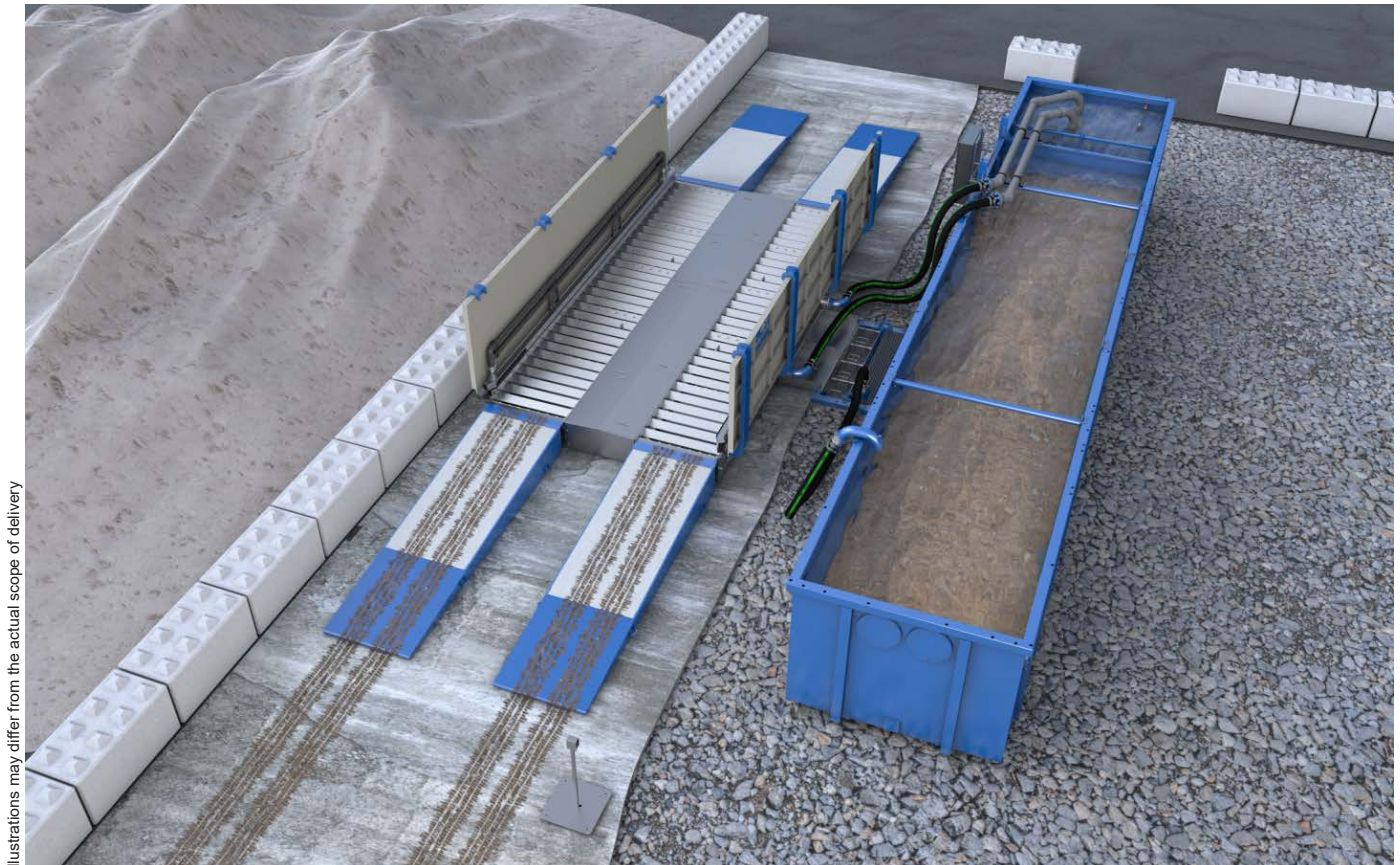
- Construction sites
- Gravel plants and quarries
- Concrete mixing plants
- Recycling facilities
- Landfill sites
- Port facilities
- Food industry
- Cleaning and disinfection
- Other areas on request

Wheel washing system

MobyDick ConLine KIT Plus 600 MB-50P

Art. no. MDC-100-016

Mobile, hot-dip galvanized, water-bearing wash unit with splash guard walls, pump sump tank, recycling tank, pump technology, solid concrete ramps, and a control system.



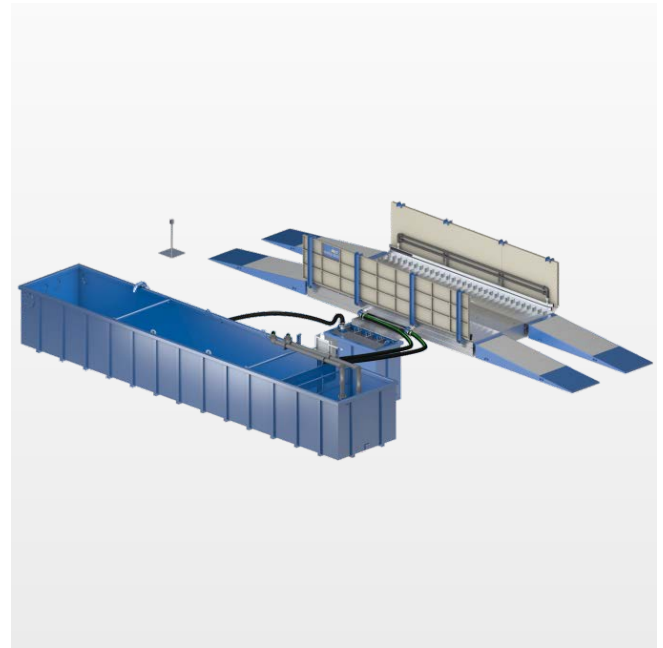
KIT Plus 600 MB-50P – a model from the ConLine KIT Plus model line

ConLine KIT Plus – Greater performance for high demands

The ConLine KIT Plus line consists of a large selection of mobile and stationary wheel washing systems that are particularly suitable for use with high truck drive-through frequencies. These modern drive-through systems are based on more than 30 years of experience with wheel washing systems and, in addition to the classic MobyDick advantages, also offer a large choice of options and an attractive price/performance ratio. All ConLine KIT Plus systems are quick and easy to install and require only minimal maintenance.

Function description

A truck drives slowly up the ramps into the wheel washing system. The vehicle identification sensor automatically triggers the washing process. The specially coordinated nozzle system, consisting of a large number of bottom and side nozzles, then ensures the intensive cleaning of all tires and the entire chassis in just over one wheel rotation. Higher vehicle areas such as windows and rear-view mirrors are not washed, so as to leave the driver's field of vision clear. The kneading effect created by the angle profiles gives the tire treads additional cleaning. The duration of the washing process can be freely selected using the timer relay in the control cabinet, in accordance with the relevant operating conditions. The waste water runs via two return channels from the wash unit to the side pump sump tank. From there it is pumped into the recycling tank by two MobyPump macerating pumps. This is where the washed-off solids settle out. The water is fed under a surge wall and over the partition wall with sieve insert into the pump chamber. There it is reused by two robust MobyPump immersion pumps for further spraying. An excavator or suction vehicle removes the settled solids from the recycling tank.



Water recycling

In all MobyDick wheel washing systems the water is circulated in a closed circuit. Water treatment is via sedimentation in the recycling tank. Sedimentation can be accelerated by adding a flocculant. The solids that settle out in the recycling tank should be extracted with an excavator or suctioned out with a suction vehicle at regular intervals (depending on how frequently the system is used).

Scope of supply

- Hot-dip galvanized, water-bearing wash unit
- Splash guard wall per side
- Double side nozzle bars per side
- 2 hot-dip galvanized return channels for the waste water
- Control cabinet
- Optical sensor to trigger the washing process
- 2 MobyPump immersion pumps
- 2 MobyPump macerating pumps
- Pump bracket and piping
- Recycling tank 50 B
- Pump sump tank
- 4 ramps to the wash unit

Specifications (Dimensions see layout)

| | |
|--------------------------------|---------------|
| • Drive-through length | 236 in |
| • Passage width | 110 in |
| • Maximum axle load | 16.5 tons |
| • Splash guard wall height | 54 in |
| • Nozzles | 198 pcs. |
| • Nozzle Ø | 0.3 in |
| • Recycling tank volume | 13,200 gal |
| • Maximum pumping capacity | 4x660 gal/min |
| • Electrical connection values | 31 HP/55 A |
| • Sound emission | < 75 dB |
| • Weight (ready to ship) | 37,500 lbs |

Fields of application

The KIT Plus 600 MB-50P model can wash up to 250 moderately soiled trucks per day.

Typical operation sites – depending on the number of trucks and degree of soiling – are

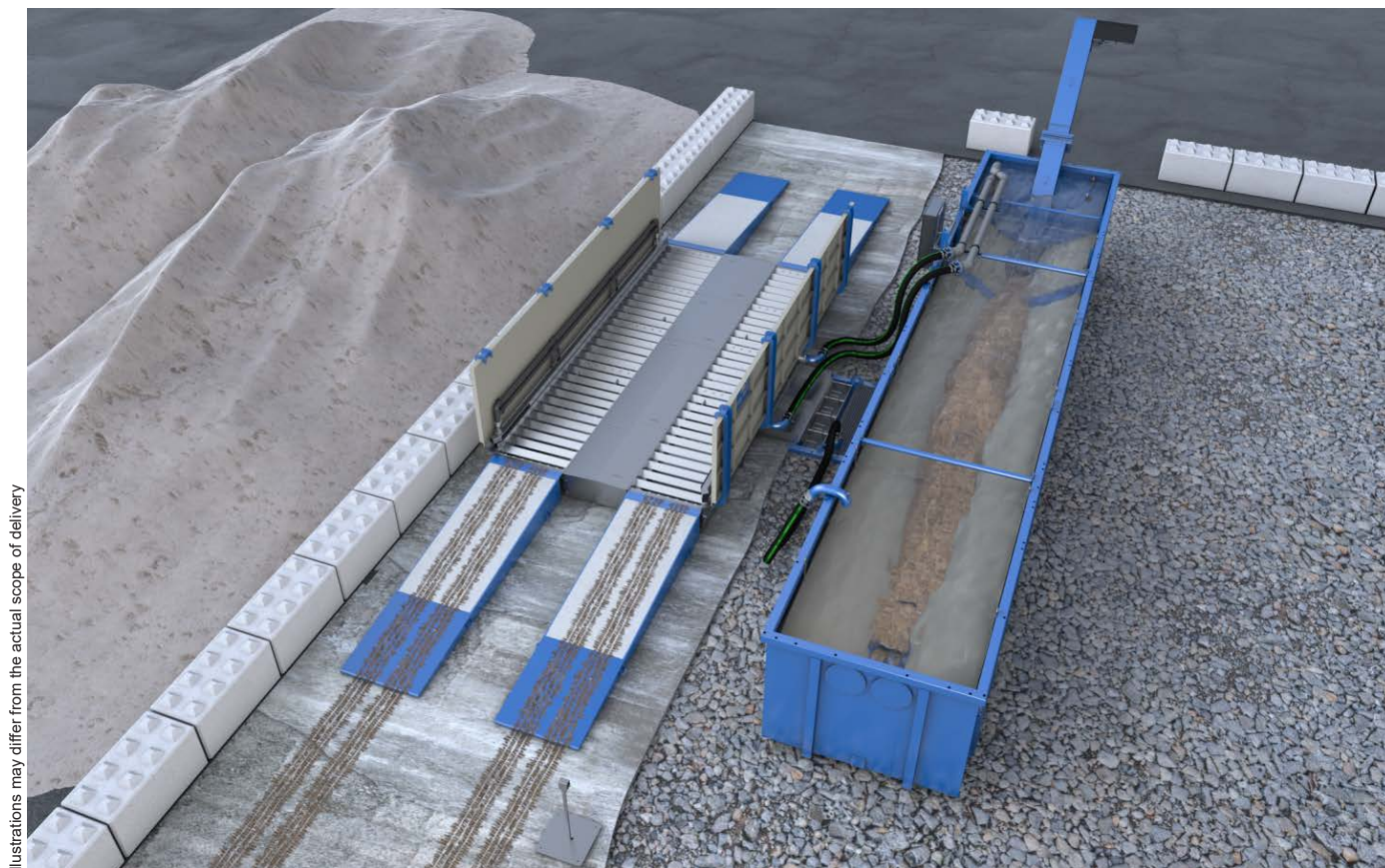
- Construction sites
- Gravel plants and quarries
- Concrete mixing plants
- Recycling facilities
- Landfill sites
- Port facilities
- Food industry
- Cleaning and disinfection
- Other areas on request

Wheel washing system

MobyDick ConLine KIT Plus 600 MC-50P

Art. no. MDC-100-017

Mobile, hot-dip galvanized, water-bearing wash unit with splash guard walls, pump sump tank, recycling tank with scraper conveyor, pump technology, solid concrete ramps, and a control system.



Illustrations may differ from the actual scope of delivery

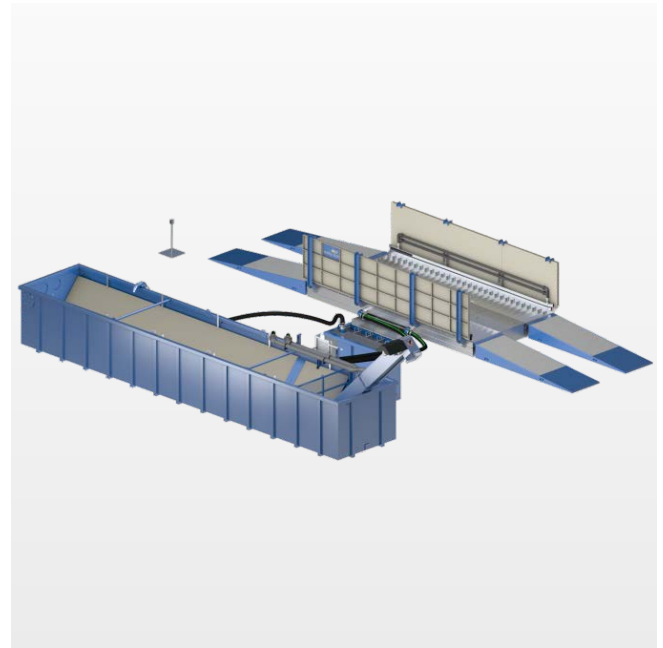
KIT Plus 600 MC-50P – a model from the ConLine KIT Plus model line

ConLine KIT Plus – Greater performance for high demands

The ConLine KIT Plus line consists of a large selection of mobile and stationary wheel washing systems that are particularly suitable for use with high truck drive-through frequencies. These modern drive-through systems are based on more than 30 years of experience with wheel washing systems and, in addition to the classic MobyDick advantages, also offer a large choice of options and an attractive price/performance ratio. All ConLine KIT Plus systems are quick and easy to install and require only minimal maintenance.

Function description

A truck drives slowly up the ramps into the wheel washing system. The vehicle identification sensor automatically triggers the washing process. The specially coordinated nozzle system, consisting of a large number of bottom and side nozzles, then ensures the intensive cleaning of all tires and the entire chassis in just over one wheel rotation. Higher vehicle areas such as windows and rear-view mirrors are not washed, so as to leave the driver's field of vision clear. The kneading effect created by the angle profiles gives the tire treads additional cleaning. The duration of the washing process can be freely selected using the timer relay in the control cabinet, in accordance with the relevant operating conditions. The waste water runs via two return channels from the wash unit to the side pump sump tank. From there it is pumped into the recycling tank by two MobyPump macerating pumps. This is where the washed-off solids settle out. The water is fed via the partition wall with sieve insert into the pump chamber. There it is reused by two robust MobyPump immersion pumps for further spraying. The scraper conveyor conveys settled solids out of the recycling tank.



Water recycling

In all MobyDick wheel washing systems the water is circulated in a closed circuit. Water treatment is via sedimentation in the recycling tank. Sedimentation can be accelerated by adding a flocculant. Settled solids are continuously conveyed out of the recycling tank by the scraper conveyor.

Scope of supply

- Hot-dip galvanized, water-bearing wash unit
- Splash guard wall per side
- Double side nozzle bars per side
- 2 hot-dip galvanized return channels for the waste water
- Control cabinet
- Optical sensor to trigger the washing process
- 2 MobyPump immersion pumps
- 2 MobyPump macerating pumps
- Pump bracket and piping
- Recycling tank 50 C with scraper conveyor
- Pump sump tank
- 4 ramps to the wash unit

Specifications (Dimensions see layout)

| | |
|--------------------------------|---------------|
| • Drive-through length | 236 in |
| • Passage width | 110 in |
| • Maximum axle load | 16.5 tons |
| • Splash guard wall height | 54 in |
| • Nozzles | 198 pcs. |
| • Nozzle Ø | 0.3 in |
| • Recycling tank volume | 13,200 gal |
| • Maximum pumping capacity | 4×660 gal/min |
| • Electrical connection values | 31 kW/55 A |
| • Sound emission | < 75 dB |
| • Weight (ready to ship) | 40,800 lbs |

Fields of application

The KIT Plus 600 MC-50P model can wash up to 250 moderately soiled trucks per day.

Typical operation sites – depending on the number of trucks and degree of soiling – are

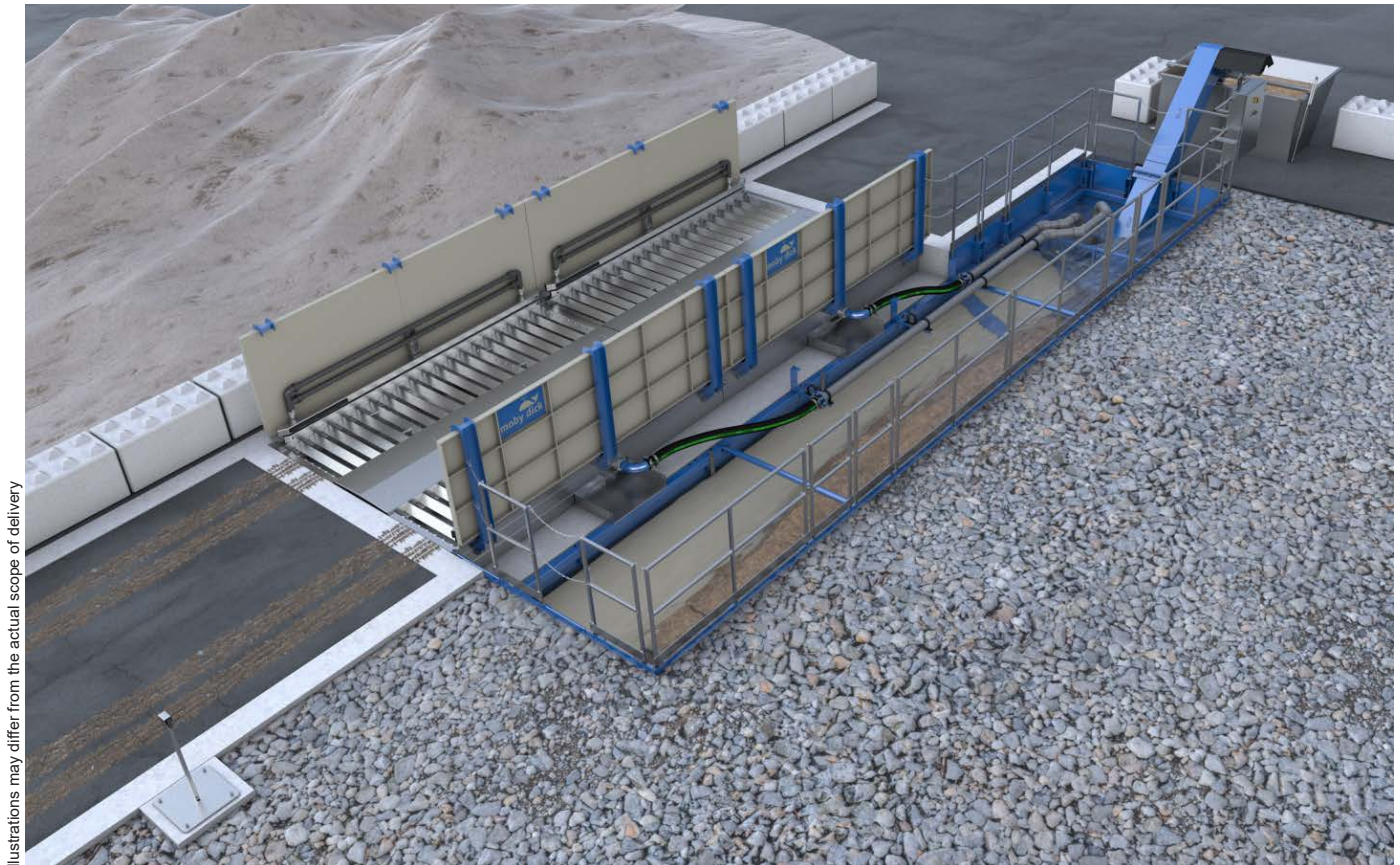
- Construction sites
- Gravel plants and quarries
- Concrete mixing plants
- Recycling facilities
- Landfill sites
- Port facilities
- Food industry
- Cleaning and disinfection
- Other areas on request

Wheel washing system

MobyDick ConLine KIT Plus 800 C-50P

Art. no. MDC-100-018

Hot-dip galvanized, water-bearing wash unit with splash guard walls, recycling tank with scraper conveyor, pump technology, and a control system.



Illustrations may differ from the actual scope of delivery

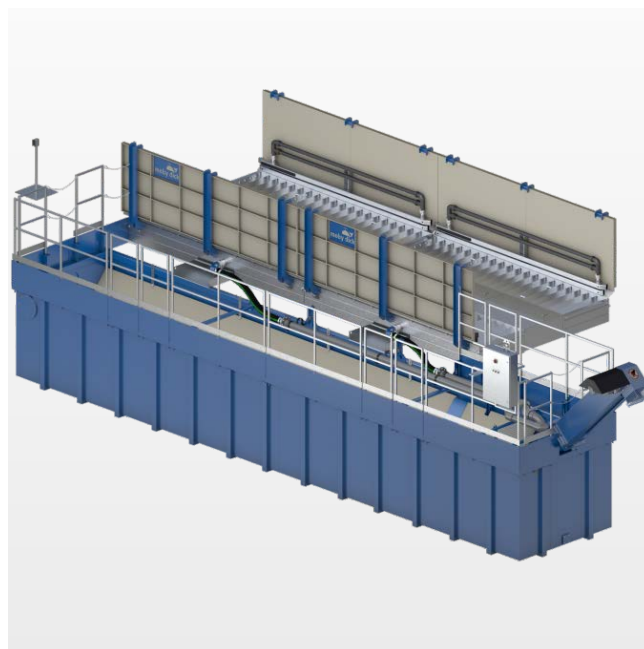
KIT Plus 800 C-50P – a model from the ConLine KIT Plus model line

ConLine KIT Plus – Greater performance for high demands

The ConLine KIT Plus line consists of a large selection of mobile and stationary wheel washing systems that are particularly suitable for use with high truck drive-through frequencies. These modern drive-through systems are based on more than 30 years of experience with wheel washing systems and, in addition to the classic MobyDick advantages, also offer a large choice of options and an attractive price/performance ratio. All ConLine KIT Plus systems are quick and easy to install and require only minimal maintenance.

Function description

A truck drives slowly into the wheel washing system. The vehicle identification sensor automatically triggers the washing process. The specially coordinated nozzle system, consisting of a large number of bottom and side nozzles, then ensures the intensive cleaning of all tires and the entire chassis in two wheel rotations. Higher vehicle areas such as windows and rear-view mirrors are not washed, so as to leave the driver's field of vision clear. The kneading effect created by the angle profiles gives the tire treads additional cleaning. The duration of the washing process can be freely selected using the timer relay in the control cabinet, in accordance with the relevant operating conditions. The waste water runs via the return channels from the wash units to the recycling tank on the side. This is where the washed-off solids settle out. The water is fed via the partition wall with sieve insert into the pump chamber. There it is reused by the robust MobyPump immersion pump for further spraying. The scraper conveyor conveys settled solids out of the recycling tank.



Water recycling

In all MobyDick wheel washing systems the water is circulated in a closed circuit. Water treatment is via sedimentation in the recycling tank. Sedimentation can be accelerated by adding a flocculant. Settled solids are continuously conveyed out of the recycling tank by the scraper conveyor.

Scope of supply

- 2 hot-dip galvanized, water-bearing wash units
- Splash guard wall per side
- Double side nozzle bars per side
- Hot-dip galvanized return channel / wash unit for the waste water
- Control cabinet
- Optical sensor to trigger the washing process
- 4 MobyPump immersion pumps
- Pump bracket and piping
- Recycling tank 50 C with scraper conveyor
- Edge elevation on recycling tank to end at ground level

Specifications (Dimensions see layout)

| | |
|--------------------------------|---------------|
| • Drive-through length | 2×157 in |
| • Passage width | 110 in |
| • Maximum axle load | 16.5 tons |
| • Splash guard wall height | 54 in |
| • Nozzles | 260 pcs. |
| • Nozzle Ø | 0.3 in |
| • Recycling tank volume | 13,200 gal |
| • Maximum pumping capacity | 4×660 gal/min |
| • Electrical connection values | 31 kW/55 A |
| • Sound emission | < 75 dB |
| • Weight (ready to ship) | 28,700 lbs |

Fields of application

The KIT Plus 800 C-50P model can wash 200 to 250 highly soiled trucks per day.

Typical operation sites – depending on the number of trucks and degree of soiling – are

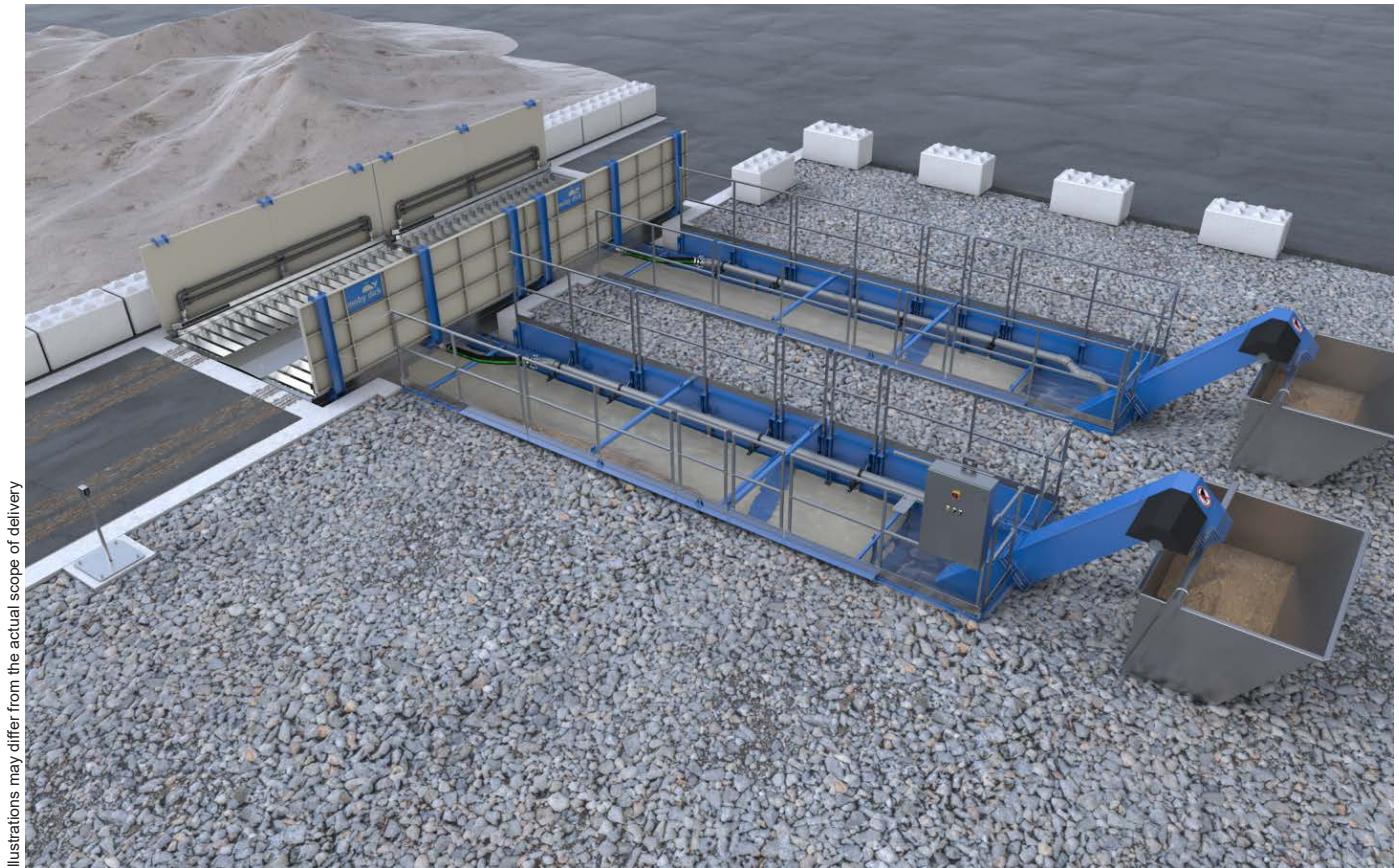
- Construction sites
- Gravel plants and quarries
- Concrete mixing plants
- Recycling facilities
- Landfill sites
- Port facilities
- Food industry
- Cleaning and disinfection
- Other areas on request

Wheel washing system

MobyDick ConLine KIT Plus 800 C-100Q

Art. no. MDC-100-019

Hot-dip galvanized, water-bearing wash unit with splash guard walls, recycling tank with scraper conveyor, pump technology, and a control system.



Illustrations may differ from the actual scope of delivery

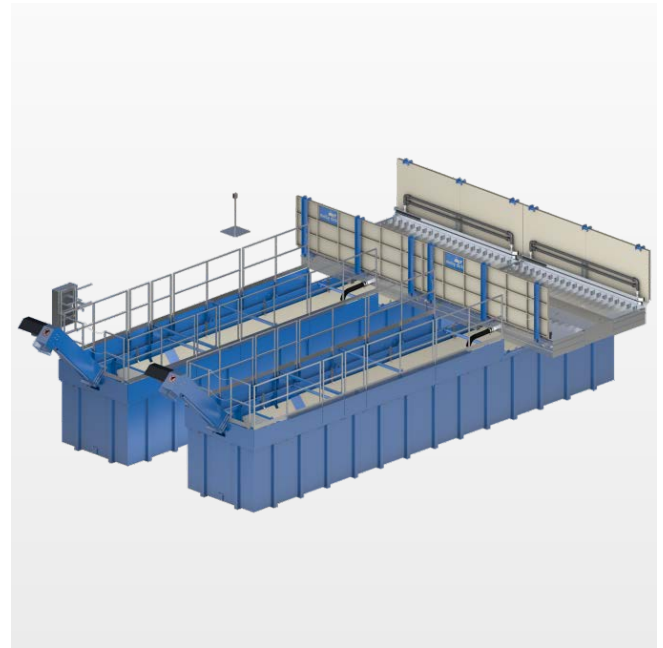
KIT Plus 800 C-100Q – a model from the ConLine KIT Plus model line

ConLine KIT Plus – Greater performance for high demands

The ConLine KIT Plus line consists of a large selection of mobile and stationary wheel washing systems that are particularly suitable for use with high truck drive-through frequencies. These modern drive-through systems are based on more than 30 years of experience with wheel washing systems and, in addition to the classic MobyDick advantages, also offer a large choice of options and an attractive price/performance ratio. All ConLine KIT Plus systems are quick and easy to install and require only minimal maintenance.

Function description

A truck drives slowly into the wheel washing system. The vehicle identification sensor automatically triggers the washing process. The specially coordinated nozzle system, consisting of a large number of bottom and side nozzles, then ensures the intensive cleaning of all tires and the entire chassis in two wheel rotations. Higher vehicle areas such as windows and rear-view mirrors are not washed, so as to leave the driver's field of vision clear. The kneading effect created by the angle profiles gives the tire treads additional cleaning. The duration of the washing process can be freely selected using the timer relay in the control cabinet, in accordance with the relevant operating conditions. The waste water runs from the wash unit directly into the recycling tanks below. This is where the washed-off solids settle out. The water is fed via the partition wall with sieve insert into the pump chamber. There it is reused by the robust MobyPump immersion pump for further spraying. The scraper conveyor conveys settled solids out of the recycling tank.



Water recycling

In all MobyDick wheel washing systems the water is circulated in a closed circuit. Water treatment is via sedimentation in the recycling tank. Sedimentation can be accelerated by adding a flocculant. Settled solids are continuously conveyed out of the recycling tank by the scraper conveyor.

Scope of supply

- 2 hot-dip galvanized, water-bearing wash units
- Splash guard wall per side
- Double side nozzle bars per side
- Control cabinet
- Optical sensor to trigger the washing process
- 4 MobyPump immersion pumps
- Pump bracket and piping
- 2 recycling tanks 50 C with scraper conveyors
- Edge elevation on recycling tank to end at ground level

Specifications (Dimensions see layout)

| | |
|--------------------------------|---------------|
| • Drive-through length | 2×157 in |
| • Passage width | 110 in |
| • Maximum axle load | 16.5 tons |
| • Splash guard wall height | 54 in |
| • Nozzles | 260 pcs. |
| • Nozzle Ø | 0.3 in |
| • Recycling tank volume | 2×13,200 gal |
| • Maximum pumping capacity | 4×660 gal/min |
| • Electrical connection values | 32 HP/55 A |
| • Sound emission | < 75 dB |
| • Weight (ready to ship) | 41,900 lbs |

Fields of application

The KIT Plus 800 C-100Q model can wash 300 to 350 highly soiled trucks per day.

Typical operation sites – depending on the number of trucks and degree of soiling – are

- Construction sites
- Gravel plants and quarries
- Concrete mixing plants
- Recycling facilities
- Landfill sites
- Port facilities
- Food industry
- Cleaning and disinfection
- Other areas on request