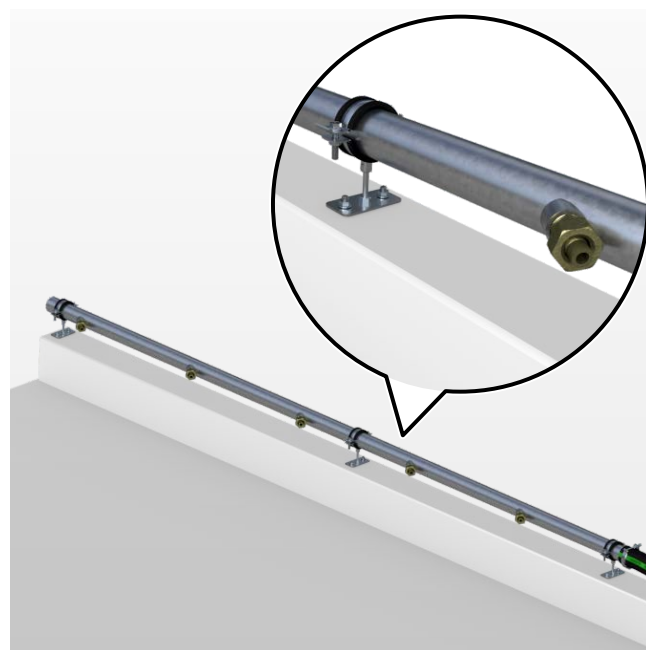
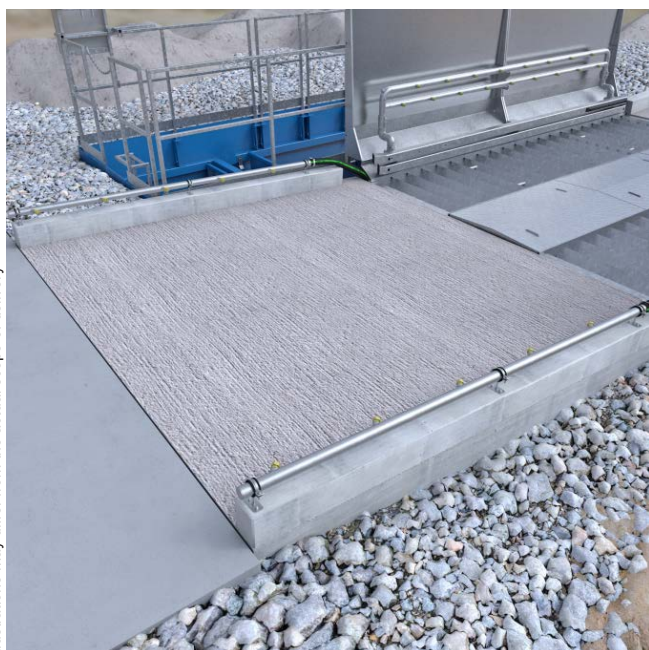


Backwash of the exit

Option Code: [-BAWS-]

Device for automatic backwash of drained waste water in the exit area.

Illustrations may differ from the actual scope of delivery



Function

During the cleaning process, some of the dirty washing water does not drip off until the exit area of the wheel washing system. After some time, the dirt particles in this water can accumulate on the driveway. With the optional *backwash of the exit*, the dirt particles are continuously flushed back into the system.

This reduces the spread of dirt and dust in the exit area.

Technical description

Two nozzle tubes each with 5 nozzles to be mounted in the exit area of the wheel washing system. The connection is created via a hose line to the washing element of the wheel washing system. No additional pump is required. The backwash starts at the same time as the washing process.

Specifications

Nozzle tubes

- | | |
|---------------------------------|--------------------------|
| • Material | Hot-dip galvanised steel |
| • Number of nozzles/nozzle tube | 5 |
| • Nozzle Ø | 8 mm |

General scope of supply

- 2 nozzle tubes
- Hose lines, hose clips
- Fittings
- Mounting material