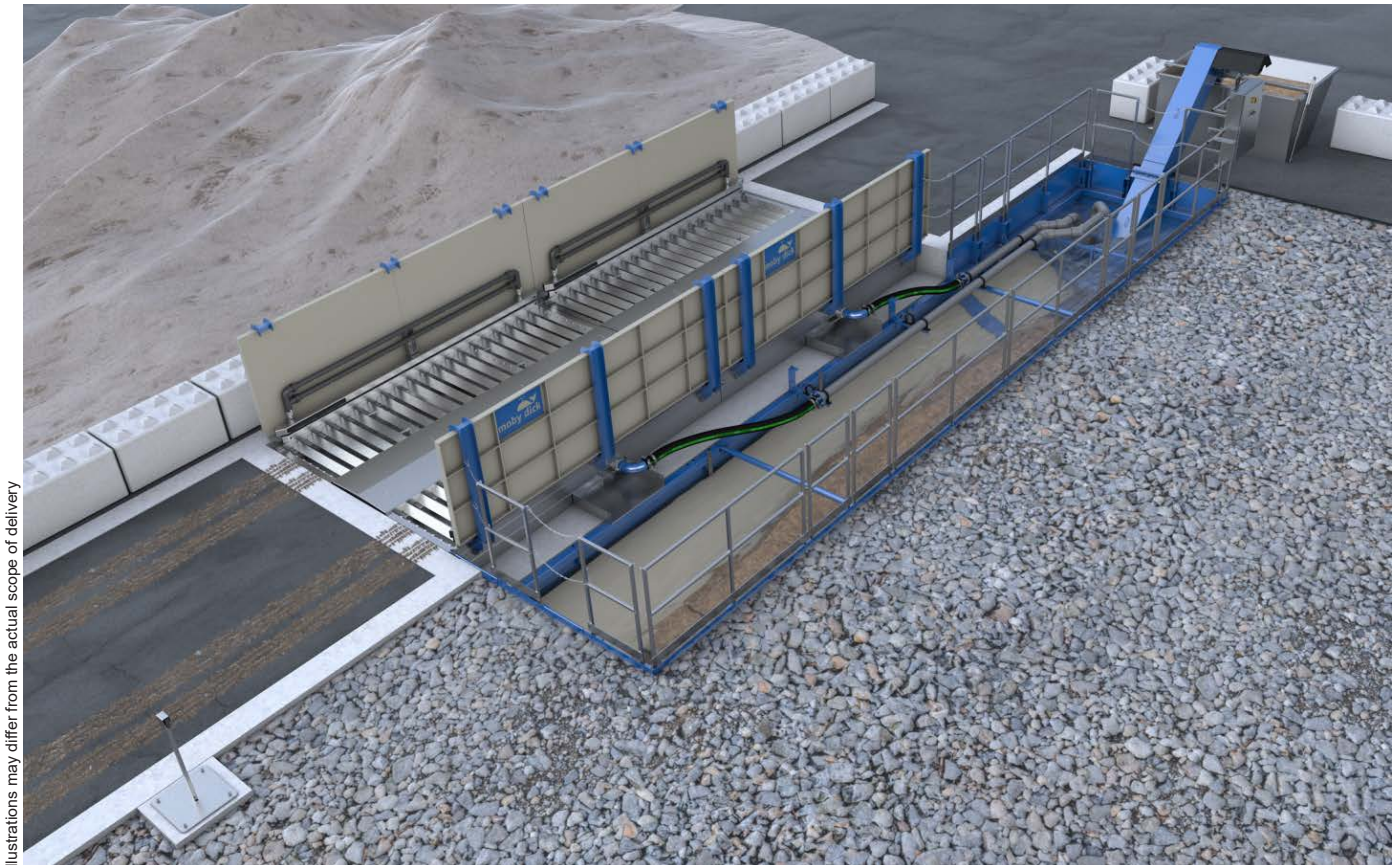


Wheel washing system

MobyDick ConLine KIT Plus 800 C-50P

Art. no. MDC-100-018

Hot-dip galvanized, water-bearing wash unit with splash guard walls, recycling tank with scraper conveyor, pump technology, and a control system.



Illustrations may differ from the actual scope of delivery

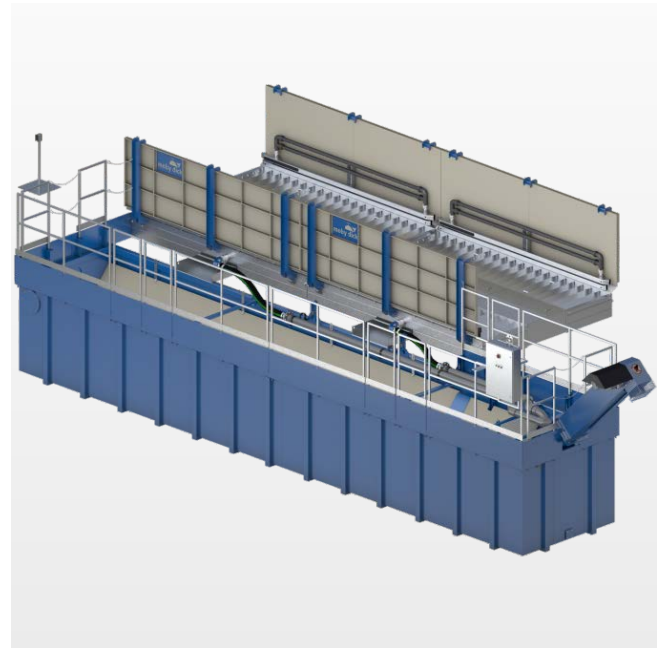
KIT Plus 800 C-50P – a model from the ConLine KIT Plus model line

ConLine KIT Plus – Greater performance for high demands

The ConLine KIT Plus line consists of a large selection of mobile and stationary wheel washing systems that are particularly suitable for use with high truck drive-through frequencies. These modern drive-through systems are based on more than 30 years of experience with wheel washing systems and, in addition to the classic MobyDick advantages, also offer a large choice of options and an attractive price/performance ratio. All ConLine KIT Plus systems are quick and easy to install and require only minimal maintenance.

Function description

A truck drives slowly into the wheel washing system. The vehicle identification sensor automatically triggers the washing process. The specially coordinated nozzle system, consisting of a large number of bottom and side nozzles, then ensures the intensive cleaning of all tires and the entire chassis in two wheel rotations. Higher vehicle areas such as windows and rear-view mirrors are not washed, so as to leave the driver's field of vision clear. The kneading effect created by the angle profiles gives the tire treads additional cleaning. The duration of the washing process can be freely selected using the timer relay in the control cabinet, in accordance with the relevant operating conditions. The waste water runs via the return channels from the wash units to the recycling tank on the side. This is where the washed-off solids settle out. The water is fed via the partition wall with sieve insert into the pump chamber. There it is reused by the robust MobyPump immersion pump for further spraying. The scraper conveyor conveys settled solids out of the recycling tank.



Water recycling

In all MobyDick wheel washing systems the water is circulated in a closed circuit. Water treatment is via sedimentation in the recycling tank. Sedimentation can be accelerated by adding a flocculant. Settled solids are continuously conveyed out of the recycling tank by the scraper conveyor.

Scope of supply

- 2 hot-dip galvanized, water-bearing wash units
- Splash guard wall per side
- Double side nozzle bars per side
- Hot-dip galvanized return channel / wash unit for the waste water
- Control cabinet
- Optical sensor to trigger the washing process
- 4 MobyPump immersion pumps
- Pump bracket and piping
- Recycling tank 50 C with scraper conveyor
- Edge elevation on recycling tank to end at ground level

Specifications (Dimensions see layout)

| | |
|--------------------------------|---------------|
| • Drive-through length | 2×157 in |
| • Passage width | 110 in |
| • Maximum axle load | 16.5 tons |
| • Splash guard wall height | 54 in |
| • Nozzles | 260 pcs. |
| • Nozzle Ø | 0.3 in |
| • Recycling tank volume | 13,200 gal |
| • Maximum pumping capacity | 4×660 gal/min |
| • Electrical connection values | 31 kW/55 A |
| • Sound emission | < 75 dB |
| • Weight (ready to ship) | 28,700 lbs |

Fields of application

The KIT Plus 800 C-50P model can wash 200 to 250 highly soiled trucks per day.

Typical operation sites – depending on the number of trucks and degree of soiling – are

- Construction sites
- Gravel plants and quarries
- Concrete mixing plants
- Recycling facilities
- Landfill sites
- Port facilities
- Food industry
- Cleaning and disinfection
- Other areas on request