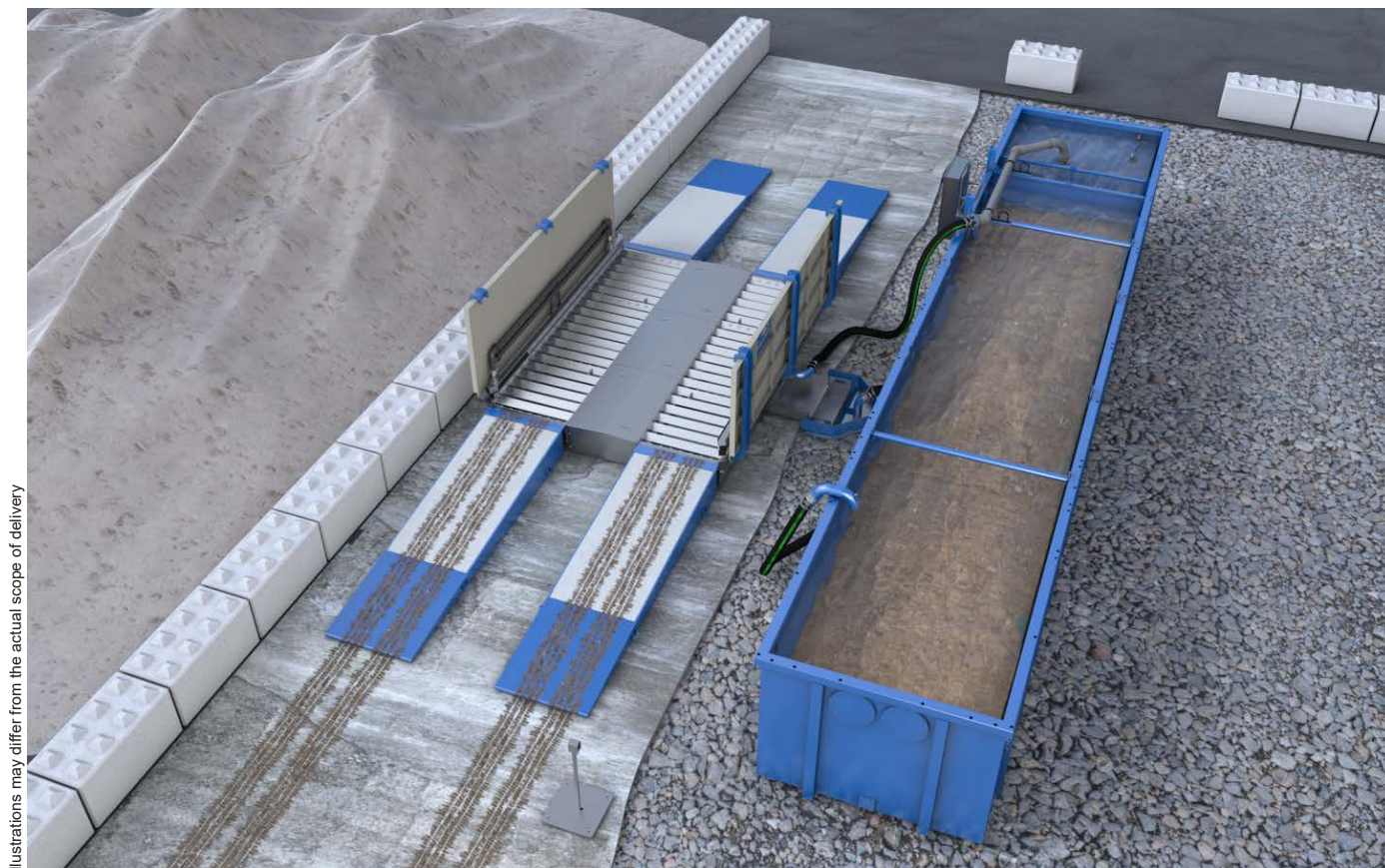


# Wheel washing system

## MobyDick ConLine KIT Plus 400 MB-50P

Art. no. MDC-100-012

Mobile, hot-dip galvanised, water-bearing wash unit with splash guard walls, pump sump tank, recycling tank, pump technology, solid concrete ramps, and a control system.



Illustrations may differ from the actual scope of delivery

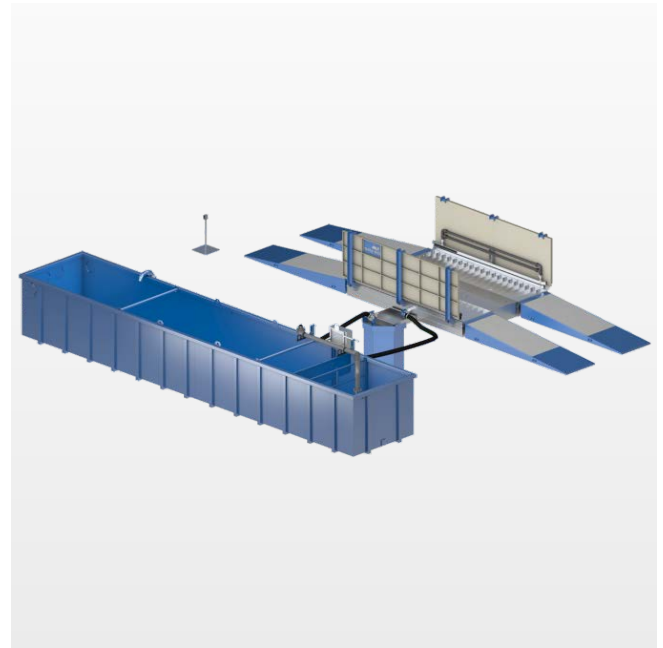
### **KIT Plus 400 MB-50P – a model from the ConLine KIT Plus model line**

ConLine KIT Plus – Greater performance for high demands

The ConLine KIT Plus line consists of a large selection of mobile and stationary wheel washing systems that are particularly suitable for use with high truck drive-through frequencies. These modern drive-through systems are based on more than 30 years of experience with wheel washing systems and, in addition to the classic MobyDick advantages, also offer a large choice of options and an attractive price/performance ratio. All ConLine KIT Plus systems are quick and easy to install and require only minimal maintenance.

### **Function description**

A truck drives slowly up the ramps into the wheel washing system. The vehicle identification sensor automatically triggers the washing process. The specially coordinated nozzle system, consisting of a large number of bottom and side nozzles, then ensures the intensive cleaning of all tires and the entire chassis in one wheel rotation. Higher vehicle areas such as windows and rear-view mirrors are not washed, so as to leave the driver's field of vision clear. The kneading effect created by the angle profiles gives the tire treads additional cleaning. The duration of the washing process can be freely selected using the timer relay in the control cabinet, in accordance with the relevant operating conditions. The waste water runs via the return channel from the wash unit to the side pump sump tank. From there it is pumped into the recycling tank by the MobyPump macerating pump. This is where the washed-off solids settle out. The water is fed under a surge wall and over the partition wall with sieve insert into the pump chamber. There it is recycled for further spraying by a robust MobyPump immersion pump. An excavator or suction vehicle removes the settled solids from the recycling tank.



### Water recycling

In all MobyDick wheel washing systems the water is circulated in a closed circuit. Water treatment is via sedimentation in the recycling tank. Sedimentation can be accelerated by adding a flocculant. The solids that settle out in the recycling tank should be extracted with an excavator or suctioned out with a suction vehicle at regular intervals (depending on how frequently the system is used).

### Scope of supply

- Hot-dip galvanised, water-bearing wash unit
- Splash guard wall per side
- Double side nozzle bars per side
- Hot-dip galvanised return channel for the waste water
- Control cabinet
- Optical sensor to trigger the washing process
- 1 MobyPump immersion pump
- 1 MobyPump macerating pump
- Pump bracket and piping
- Recycling tank 50 B
- Pump sump tank
- 4 ramps to the wash unit

### Specifications (Dimensions see layout)

• Drive-through length	400 cm
• Passage width	280 cm
• Maximum axle load	15.0 t
• Splash guard wall height	136 cm
• Nozzles	130 pcs.
• Nozzle Ø	7 mm
• Recycling tank volume	50.0 m <sup>3</sup>
• Maximum pumping capacity	2×2.5 m <sup>3</sup> /min
• Electrical connection values	12 kW/30 A
• Sound emission	< 75 dB
• Weight (ready to ship)	15,000 kg

### Areas of application

The KIT Plus 400 MB-50P model can wash up to 250 moderately soiled trucks per day.

Typical operation sites – depending on the number of trucks and degree of soiling – are

- Construction sites
- Gravel plants and quarries
- Concrete mixing plants
- Recycling facilities
- Landfill sites
- Port facilities
- Food industry
- Cleaning and disinfection
- Other areas on request